

Estabrook Elementary School
117 Grove Street
Lexington, Massachusetts 02420

Sandra A. Trach
Principal

strach@sch.ci.lexington.ma.us
Tel: (781) 861-2520
Fax: (781) 862-5610

To: Dr. Paul B. Ash, Ph.D., Superintendent of Schools

From: Sandra A. Trach, Principal, Estabrook School

Date: June 12, 2014

R/E: Traffic Design for the new Estabrook School 2014-2015

I am writing to send you the new Estabrook School traffic design for 2014-2015. The attached presentation outlines the Estabrook School Access Ad Hoc Task Force (ETF) recommendations and the Estabrook 2014-2015 traffic design. The new traffic design offers the Estabrook School flexible transportation options to ensure safety for students, staff and parents.

The attached presentation also provides for a collaborative approach to implementation, continued study and ongoing education.

I look forward to sharing the new Estabrook School traffic design with the Lexington School Committee and implementing its new features in 2014-2015.

Estabrook School Traffic Plan 2014-2015

Sandra A. Trach, Estabrook School Principal
Mark Corr, Chief of Police

June 17, 2014

Estabrook School Access Ad Hoc Task Force (ETF)

ETF Charge: To advise the School Committee and Board of Selectmen on providing

- **Safe access during construction of the new Estabrook School** by the vehicular traffic of parents, faculty and construction vehicles, including pedestrians;
- **Safe access for public safety** (police and fire department) purposes after the new school is constructed and in use; and
- Access necessary for **safe access by students who walk to the school, and by parents/guardians who use school buses** to drop off or pick up students.

Problems identified

- Vehicle queuing & traffic congestion at the school entrance
- Inadequate public safety access
- Poor pedestrian access
- Parking spilling over onto private streets causing hazardous conditions on nearby roads

Main access

Task Force recommended :

- Grove Street remain the primary access
- with Robinson Road being the secondary access

Why Grove St. should be the main access

- Sight lines are better at Grove & Access Road than at Robinson & Grove St.
- Grove Street is more direct and can accommodate more vehicular volume
- Robinson Road has a 90 degree turn which would be difficult for vehicles to navigate
- Accessing the school from Grove Street will allow for a longer internal vehicular queue, which helps to resolve a major safety concern

ETF recommendations

- Eliminate queuing on all public streets
- Upgrade Robinson Rd. to a minimum of 18 feet
- Install a sidewalk the length of Robinson Rd. to Grove St.
- Provide turn around area at end of Robinson
- Improve corner of Robinson Road at Turning Mill Road
- Improve the Robinson Road and Grove Street intersection
- Improve site lines on Grove Street by the school entrance

Further recommendations

- In lieu of further aggressive & costly off-site improvements

Community should work towards modifying behavior & improving procedural methods for arrival & dismissal

Queue conclusions

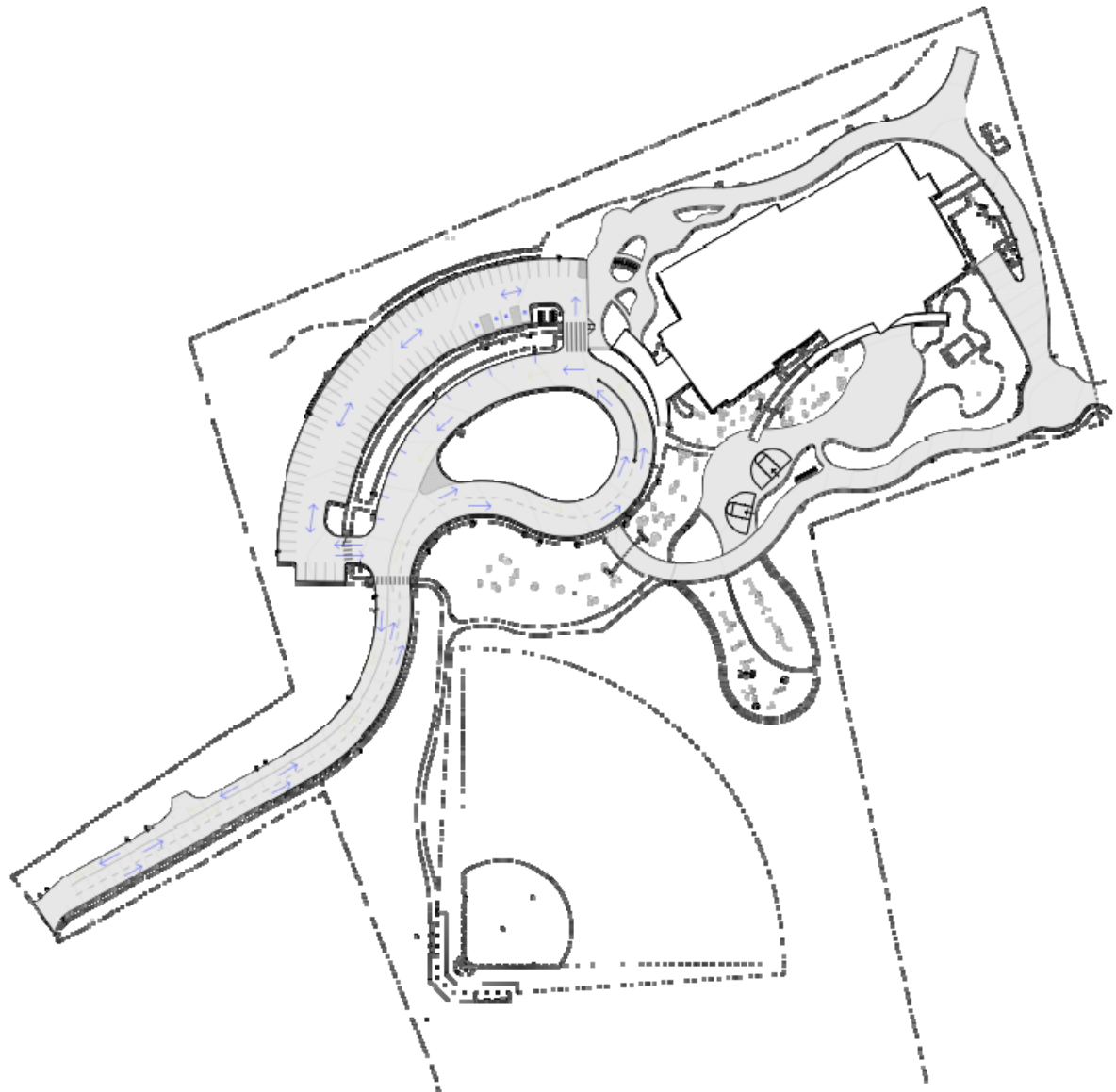
- New site will be able to accommodate existing queue
- New site will have added queue capacity for school if at full occupancy

Final thoughts from ETF

- School site design should meet ETF Objectives
- Town & Schools should work towards more bussing, walking, biking and car pooling
- Town should work closely with neighborhoods on Grove & Robinson on design of off site improvements

New traffic design

- Longer queue
- Flexible design
- Collaborative approach to implementation
- Continued study in the fall
- Ongoing education



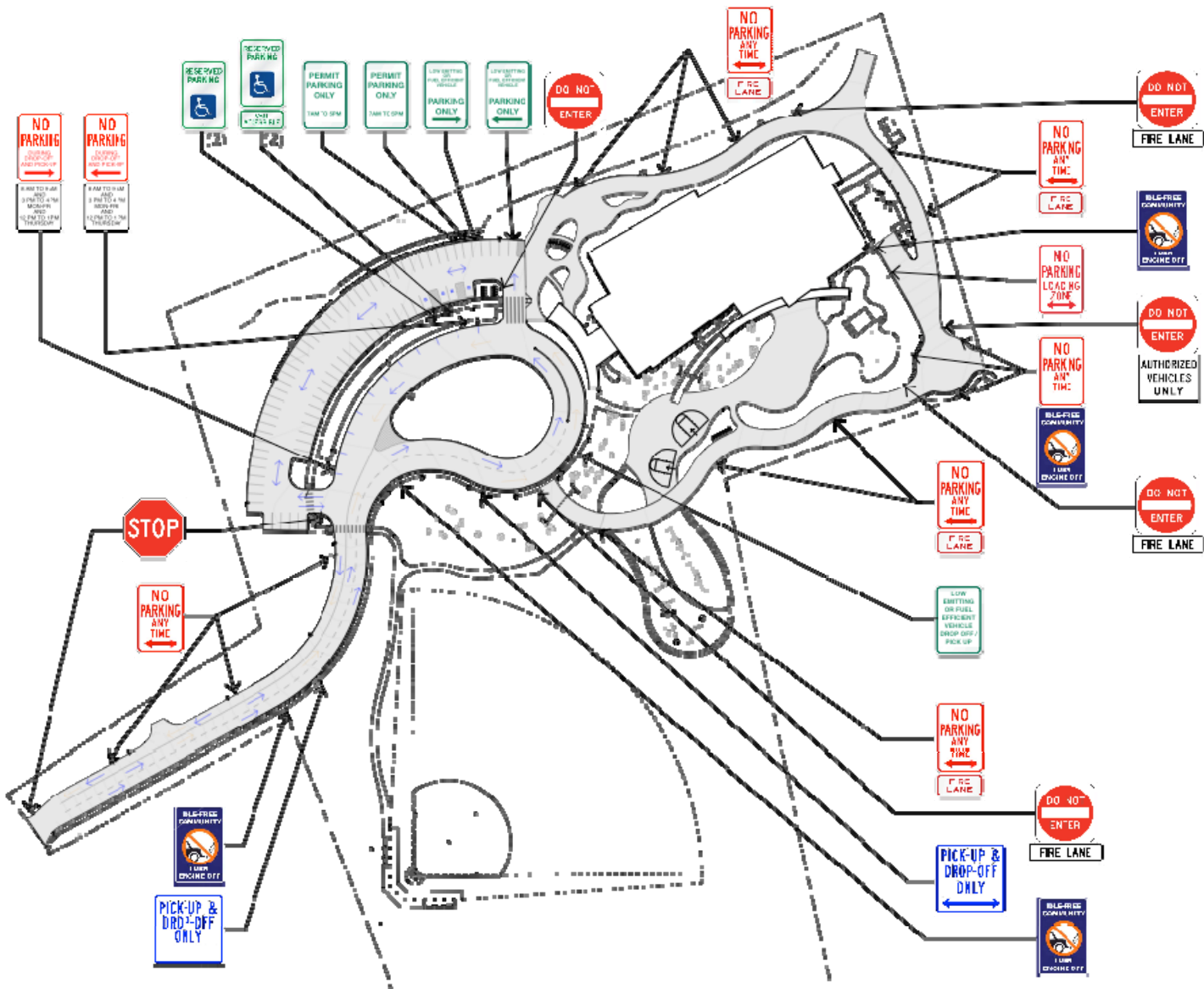
**CITABROOK
ELEMENTARY
SCHOOL**

Loisiger, MA

**Proposed Traffic
Signage**

03 June 2014

Diagrams Design Partnership
1000 10th Street, Suite 100, Cambridge, MA 02142



CITABROOK
ELEMENTARY
SCHOOL

Longden, MA

Proposed Traffic Signage

10 June 2014
 Design Design Partnership
 2000

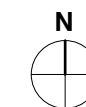
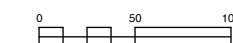
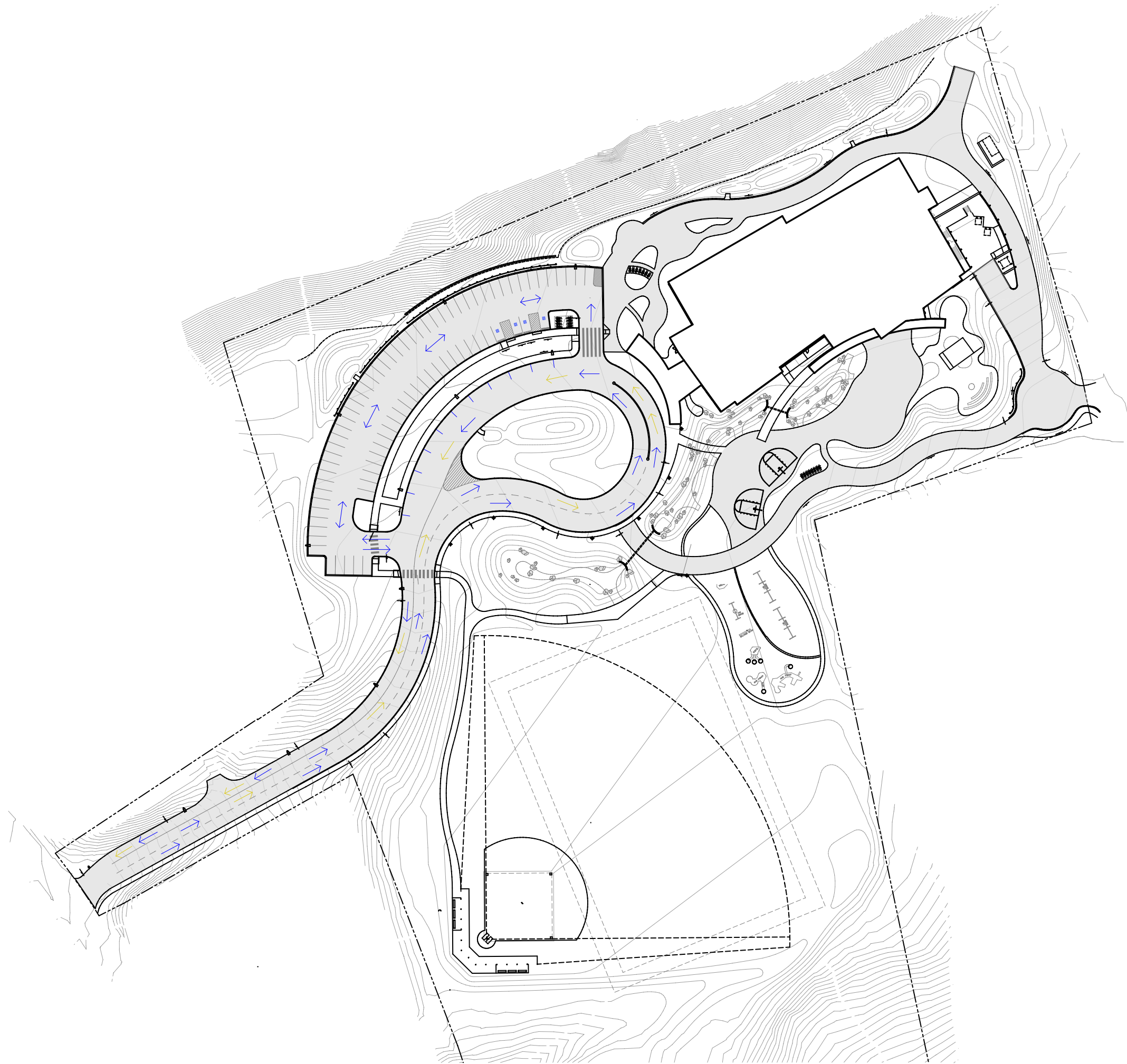
Ongoing education

- Principal Coffee regarding traffic on April 9, 2014
- Community Letter from Principal Trach and Chief Corr on May 14, 2014
- Estabrook Newsletter May 14, 2014
- Principal Trach and Chief Corr held an Estabrook parent meeting on Monday, May 19, 2014
- August 2014 informational packet - arrival, dismissal, Safe Routes to School and parking procedures will be mailed to each household
- Fall 2014 principal coffees, PTA meetings, newsletters, community mailings
- PTA sponsored “Make Just One Change” campaign

ESTABROOK
ELEMENTARY
SCHOOL

Lexington, MA

**Proposed Traffic
Signage**

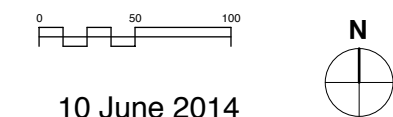
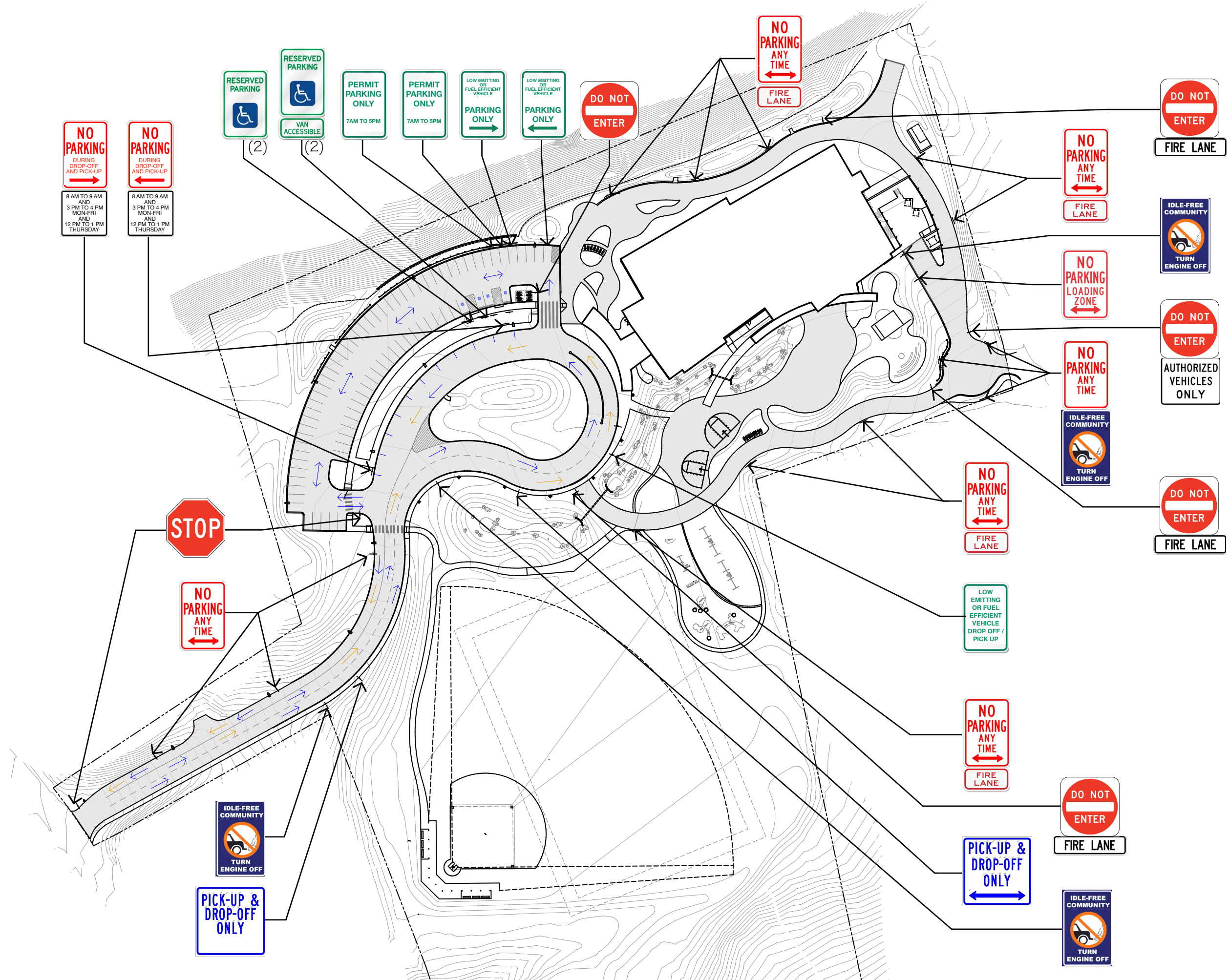


03 June 2014

ESTABROOK
ELEMENTARY
SCHOOL

Lexington, MA

Proposed Traffic
Signage



10 June 2014



Estabrook School Access Ad Hoc Task Force (ETF)

UPDATE



Task Force Membership

- Michelle Ciccolo, Chair
- Christian Boutwell
- Jim Brown
- Judy Crocker
- Peter Johnson
- Richard Larrabee
- Ed Loturco
- Ben Moroze
- Harold Payson
- Tom Peterson

Liaisons:

- Deb Mauger
- MaryAnn Stewart

Public Safety:

- Police Chief-Mark Corr
- Interim Fire Chief -
Keith Hoyle
- Public Works Director -
Bill Hadley



Key Staff Participants:

- School Principal - Sandra Trach
- Facilities Director - Pat Goddard
- Town Engineer - John Livsey
- Administrative Assistance – Lisa Rozzi



ETF CHARGE:

To advise the School Committee and Board of Selectmen on providing:

- **Safe access during construction of the new Estabrook School** by the vehicular traffic of parents, faculty and construction vehicles, including pedestrians;
- **Safe access for public safety** (police and fire department) purposes after the new school is constructed and in use; and
- Access necessary for **safe access by students who walk to the school, school buses and parents/guardians** dropping off or picking up students.



Guiding Concepts:

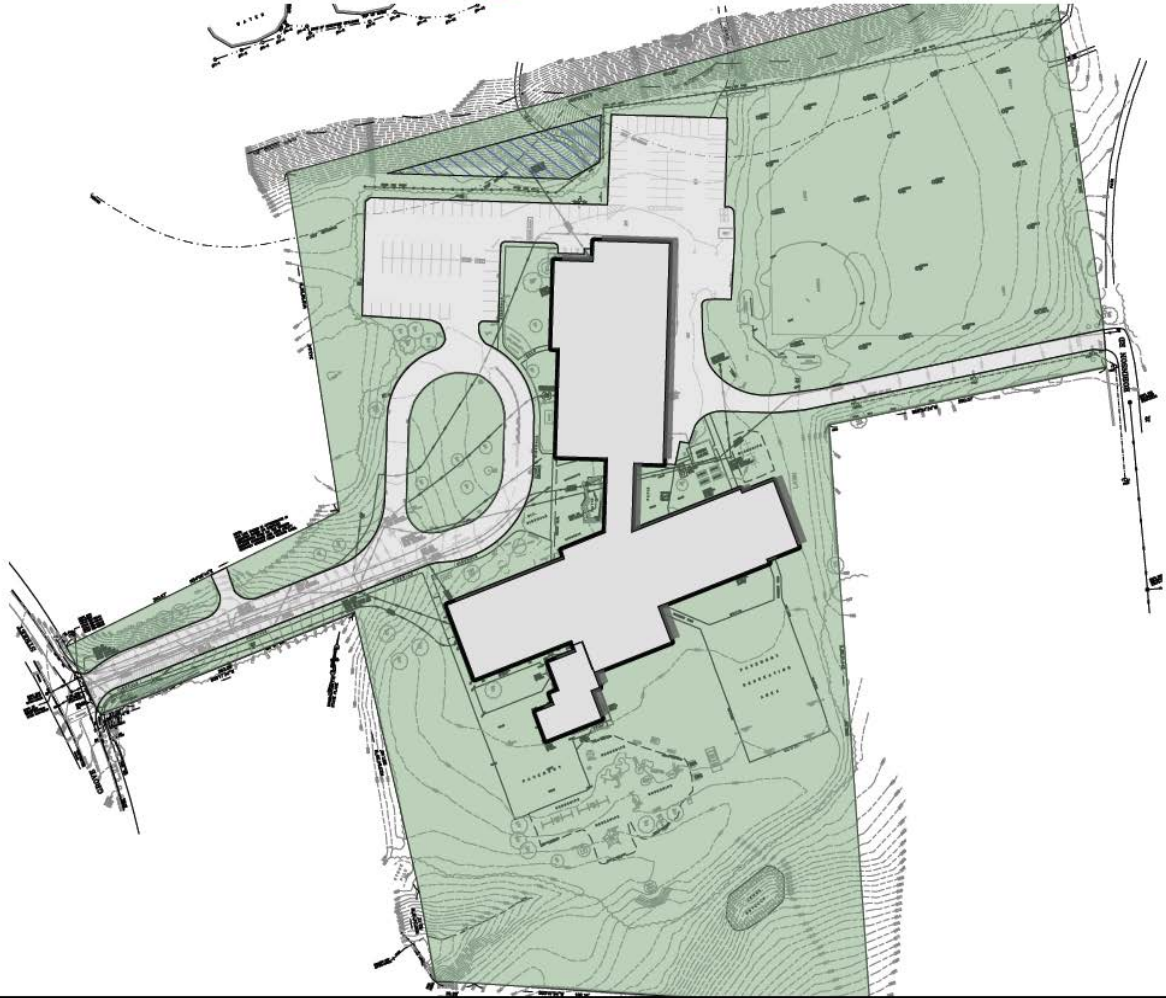
- Maximize safety for students & others accessing site
- Allow for adequate public safety response
- Allow construction to proceed on schedule
- Seek plans that improve safety & efficiency of processing student pick ups and drop offs
- Minimize cost to the town for implementing any solutions
- Minimize negative environmental outcomes
- Minimize impacts to residential neighbors
- Minimize neighborhood disruption during peak times
- Attempt to find solutions that do not merely transfer the problem or burden from one location to another



Process

- TM Authorized funding to explore options
- DPW / ETF hired Beta Group, Inc. to do a traffic study & evaluate access options
- 6 concepts examined
- Public charette held & 11 public meetings overall

Estabrook - Existing

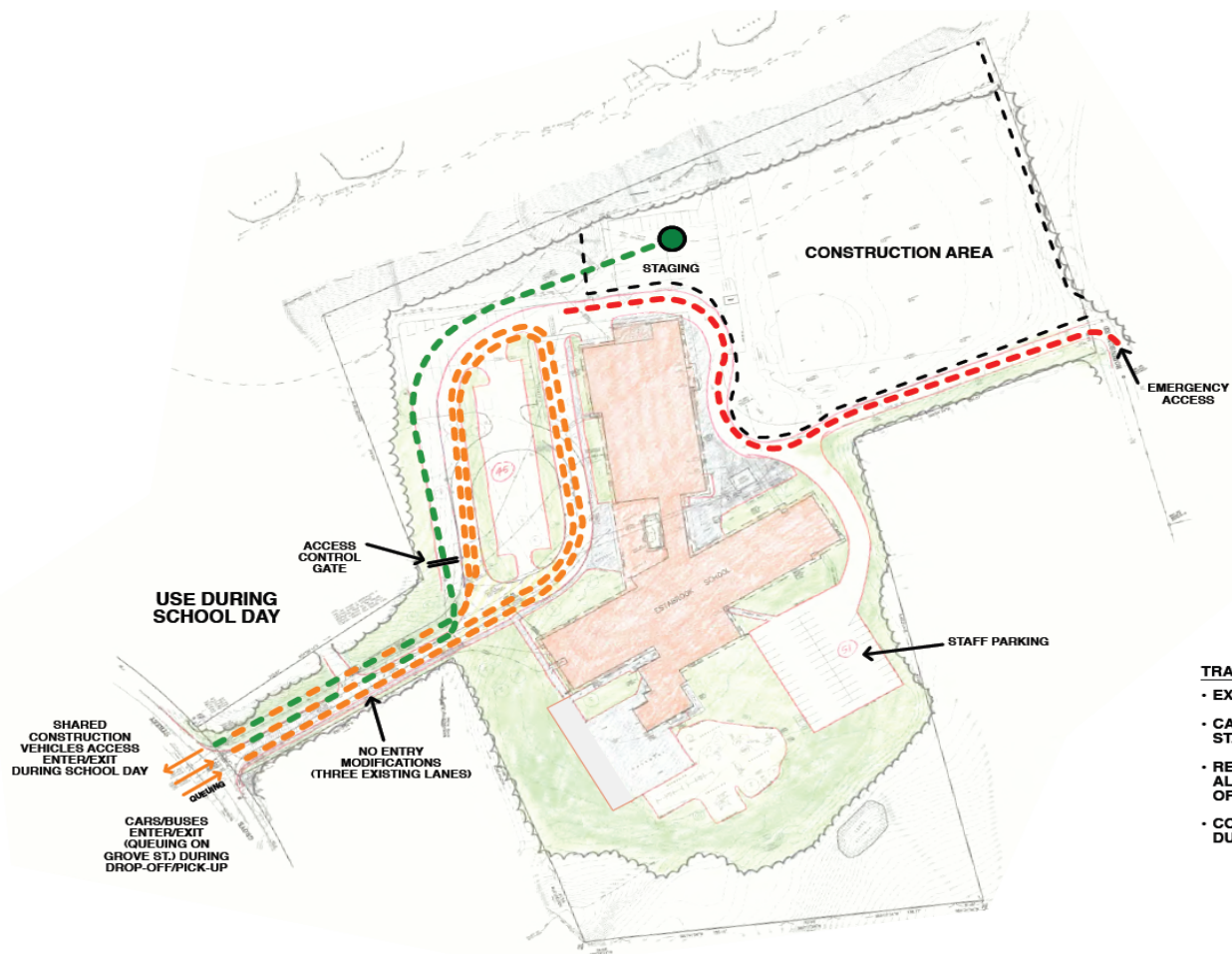




Problems Identified:

- Vehicle queuing & traffic congestion at the school entrance
- Inadequate public safety access
- Poor pedestrian access
- Parking spilling over onto private streets causing hazardous conditions on nearby roads



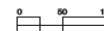


TRAFFIC ACCESS SUMMARY

- EXISTING ENTRY REMAINS UNCHANGED
- CARS / BUSES ENTER / EXIT OFF OF GROVE ST. WITH QUEUING ALONG GROVE ST.
- RESTRICTED CONTRACTOR ACCESS - NOT ALLOWED TO ENTER / EXIT DURING DROP-OFF / PICK-UP
- CONTRACTOR SHARES ENTER / EXIT LANES DURING SCHOOL DAY

Construction Access - Option 5A (Recommended - Modified Option)

ESTABROOK ELEMENTARY SCHOOL
Lexington, MA



01 November 2011





Main Access:

Task Force recommended :

- *Grove Street remain the primary access*
- *with Robinson Road being the secondary access*



Why Grove St. should be main

- Sight lines are better at Grove & Access Road than at Robinson & Grove St.
- Grove Street is more direct and can accommodate more vehicular volume
- Robinson Road has a 90 degree turn which would be difficult for vehicles to navigate
- Accessing the school from Grove Street will allow for a longer internal vehicular queue which helps to resolve a major safety concern





ETF Recommendations:

- **Eliminate queuing on all public streets**
- **Upgrade Robinson Rd. to a minimum of 18 feet**
- **Install a sidewalk the length of Robinson Rd. to Grove St.**
- **Provide turn around area at end of Robinson**
- **Improve corner of Robinson Road at Turning Mill Road**
- **Improve the Robinson Road and Grove Street intersection**
- **Improve site lines on Grove Street by the school entrance**

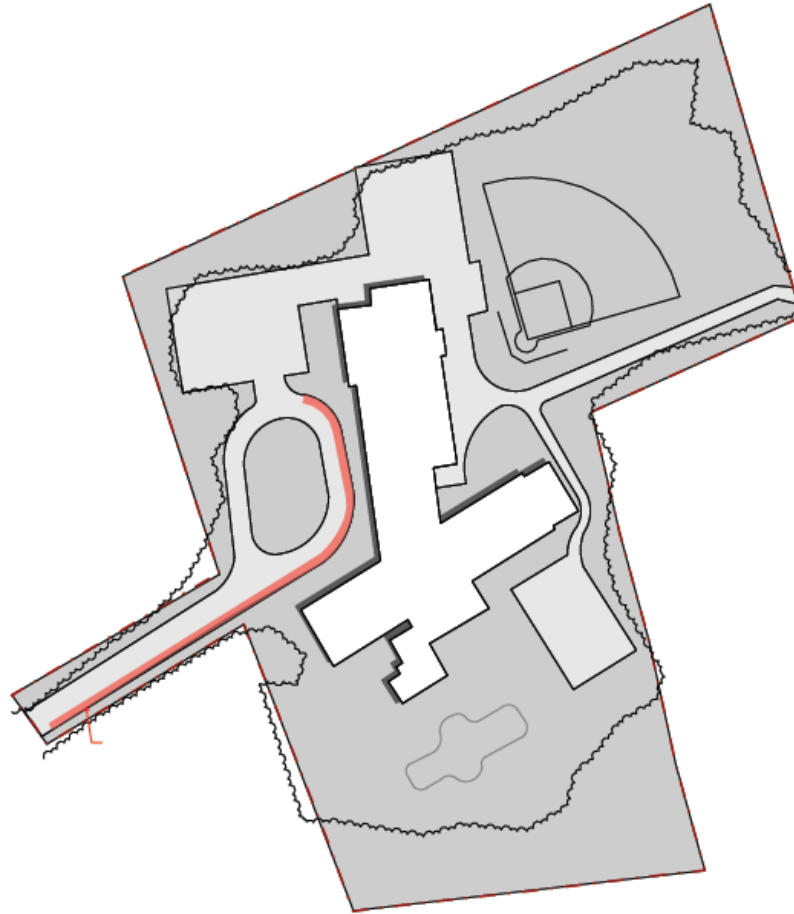


Further Recommendations:

- In lieu of further aggressive & costly off-site improvements –

Community should work towards modifying behavior & improving procedural methods for arrival & dismissal

Queuing - Existing Conditions



QUEUING

EXISTING

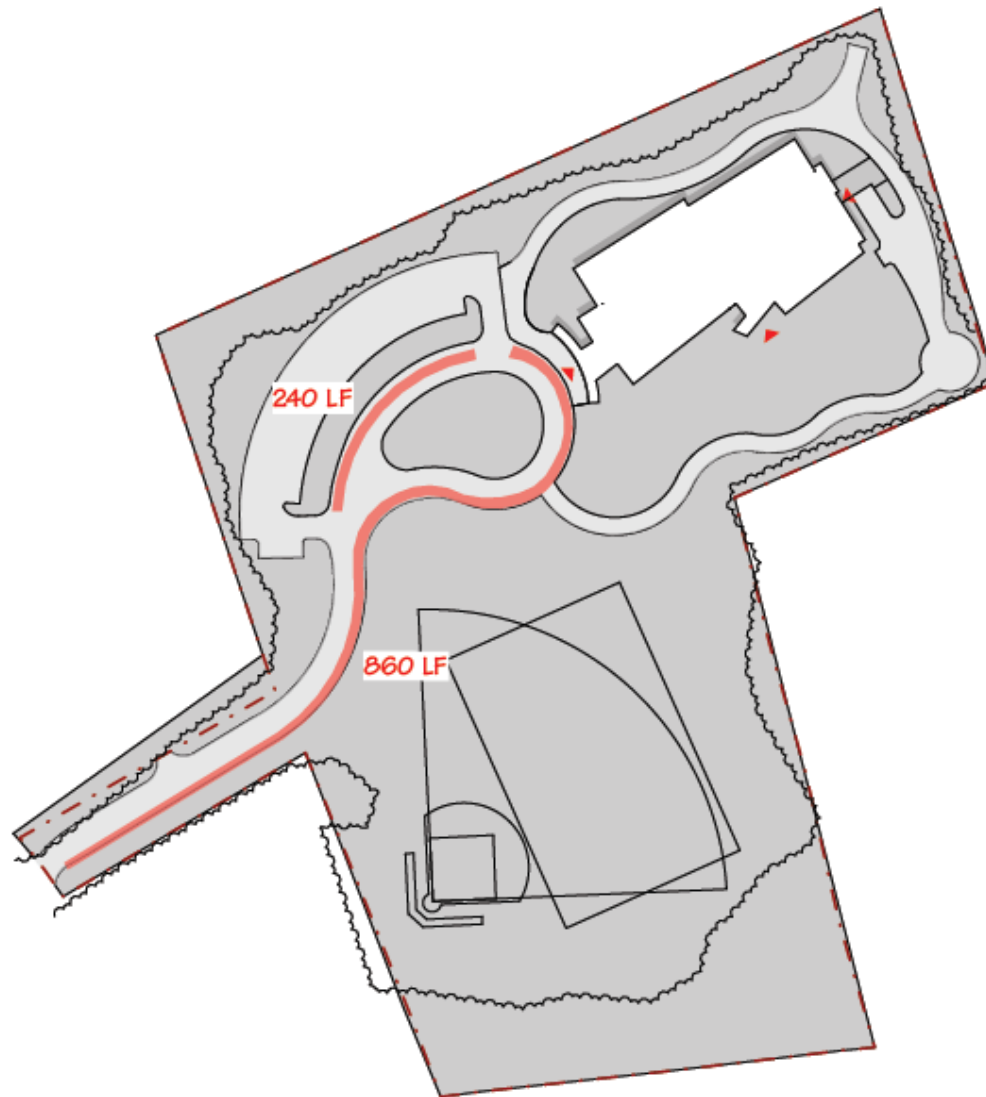
480 LF



Existing Queue

- Approximately 1,000 feet
- Projected Queue = 1,400 feet

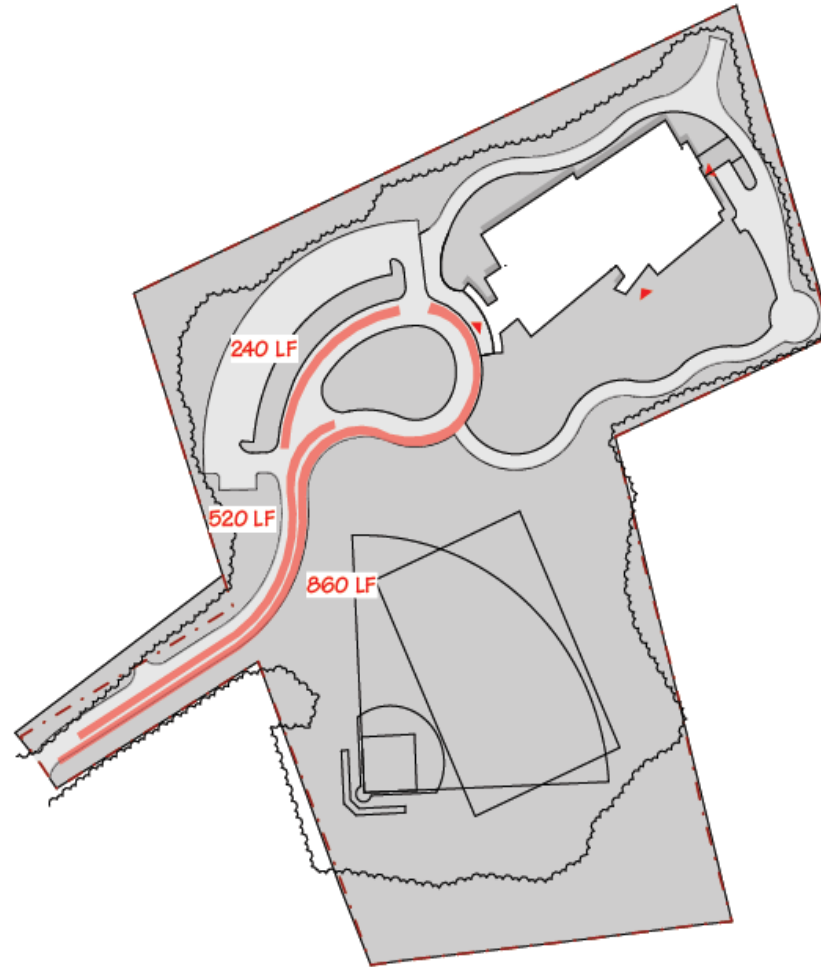
Single Queue Lane Capacity:



QUEUING

EXISTING	480 LF
ADDITIONAL	1,100 LF

Queuing Plan - Flexibility if Required



QUEUING

EXISTING 480 LF
FLEXIBILITY 1,620 LF



Queue Conclusions:

- New site will be able to accommodate existing queue
- New site will have added queue capacity for school if at full occupancy



Final Thoughts:

- School site design should meet ETF Objectives
- Town & Schools should work towards more bussing, walking, biking and car pooling
- Town should work closely with neighborhoods on Grove & Robinson on design of off site improvements