



Community Meeting

September 14, 2017



Maria A. Hastings Elementary School

 **DINISCO DESIGN**
architects + planners

© 2017 DiNisco Design, Inc.

Agenda

- Introductions
- Project Milestones & Timeline
- Site & Building Updates
- Construction Logistics Considerations

Project Schedule | Milestones

- **Milestones Dates**

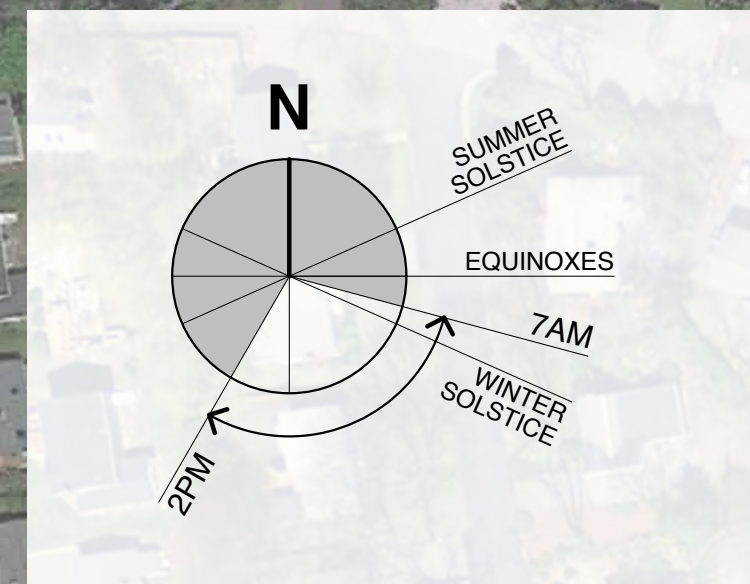
- August 23, 2017 MSBA Board Voted to Approve Project
- October 16, 2017 Lexington Special Town Meeting
- Nov/Dec 2017 Lexington Town-Wide Referendum

- **Early Construction**

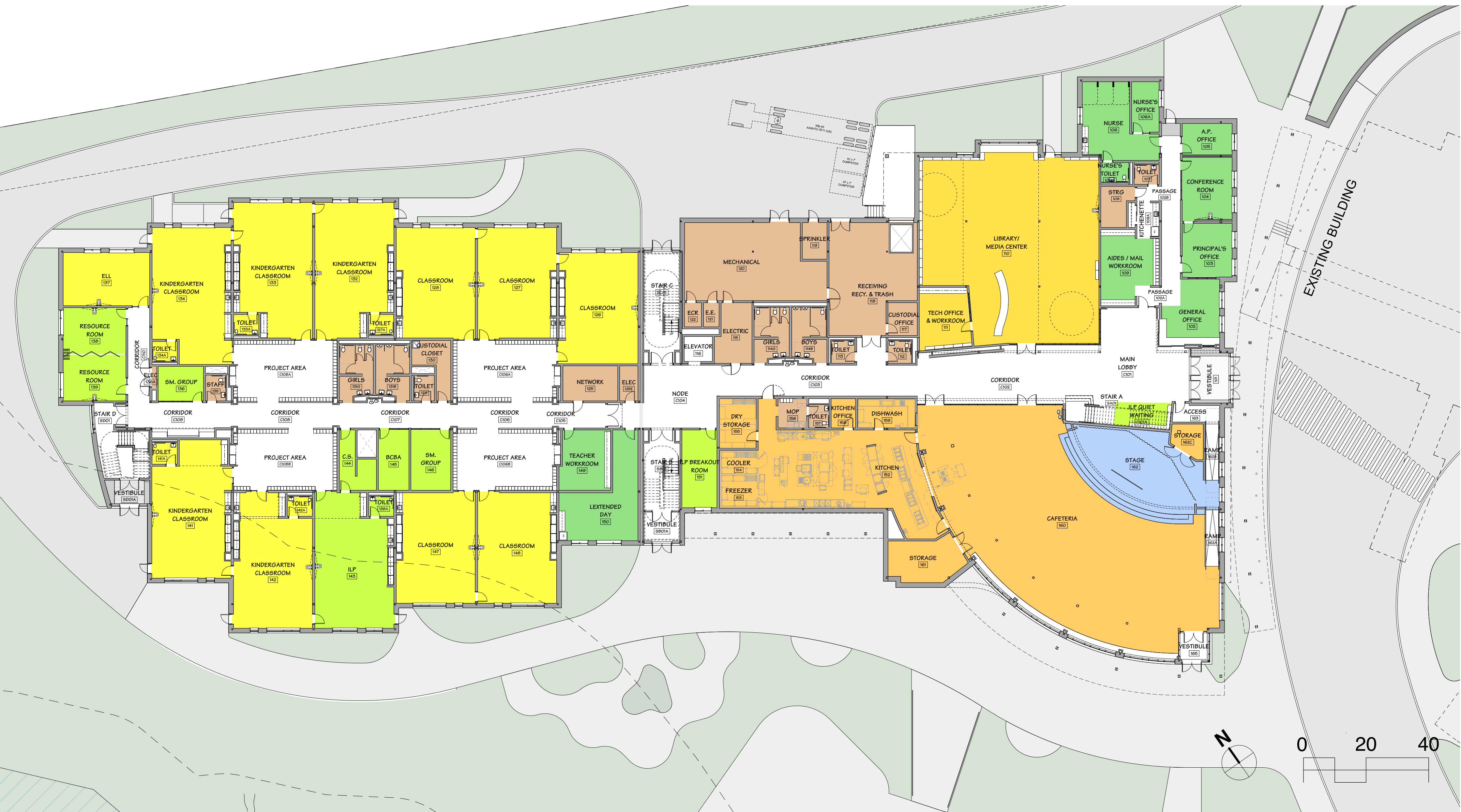
- May – June 2018 Site Enabling
- June – Nov 2018 Geothermal Wells, Foundations & Steel

Design Development | Site Plan

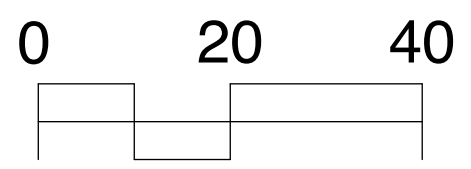
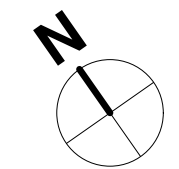
- 645 Students
- 110,000 SF
- 120 Parking Spaces



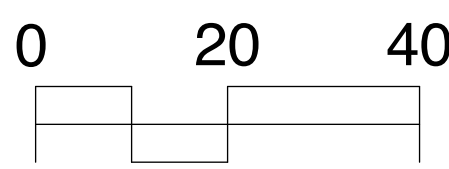
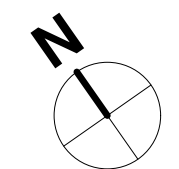
Design Development | First Floor Plan



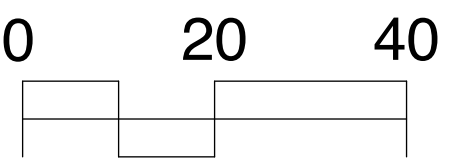
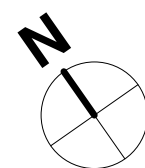
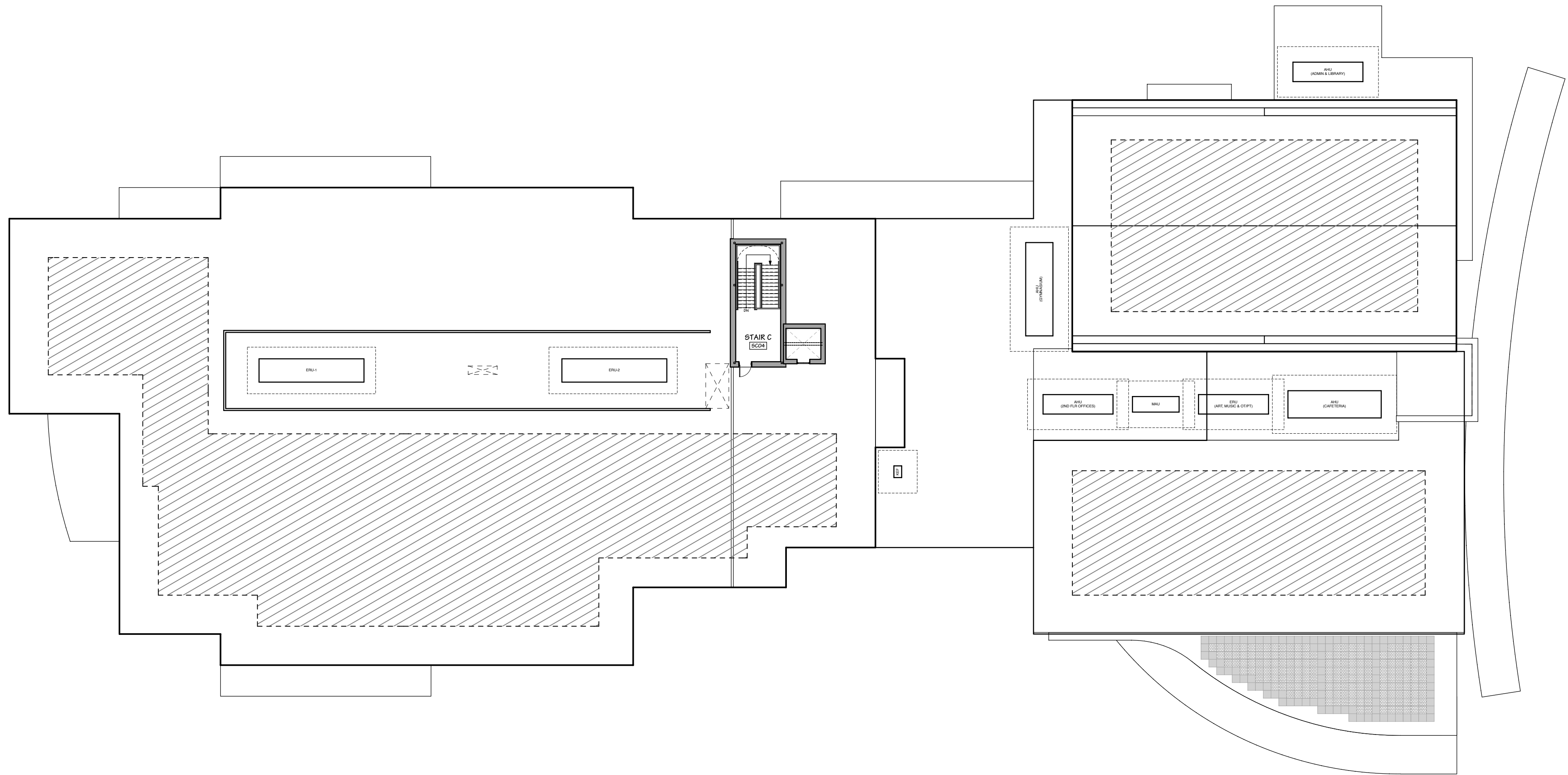
Design Development | Second Floor Plan



Design Development | Third Floor Plan



Design Development | Roof Plan



View from Drop-off Loop



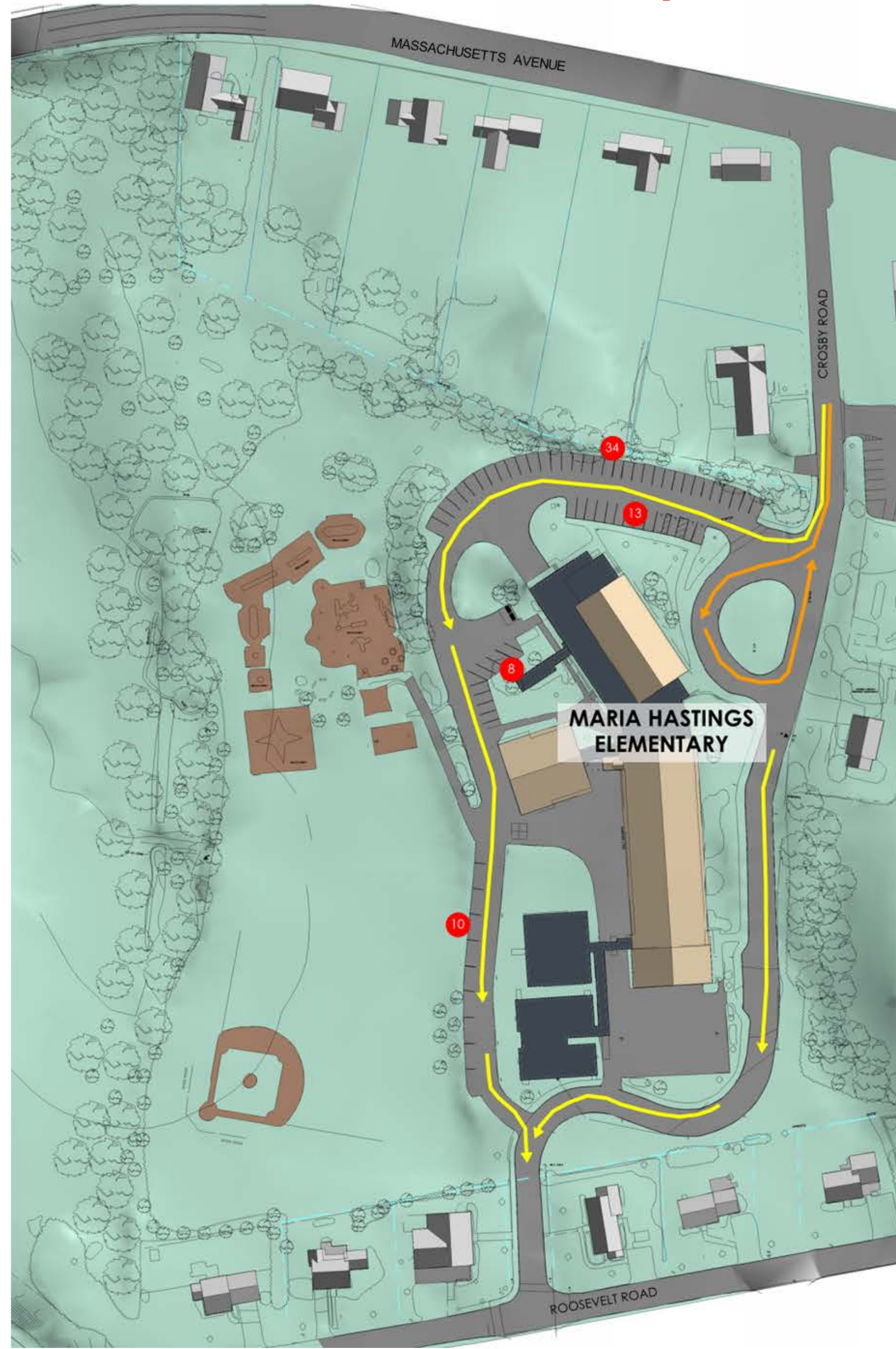
View from Entry Drive



View from Playground



Preliminary Logistics Plan | Existing Conditions



PARKING MATRIX #

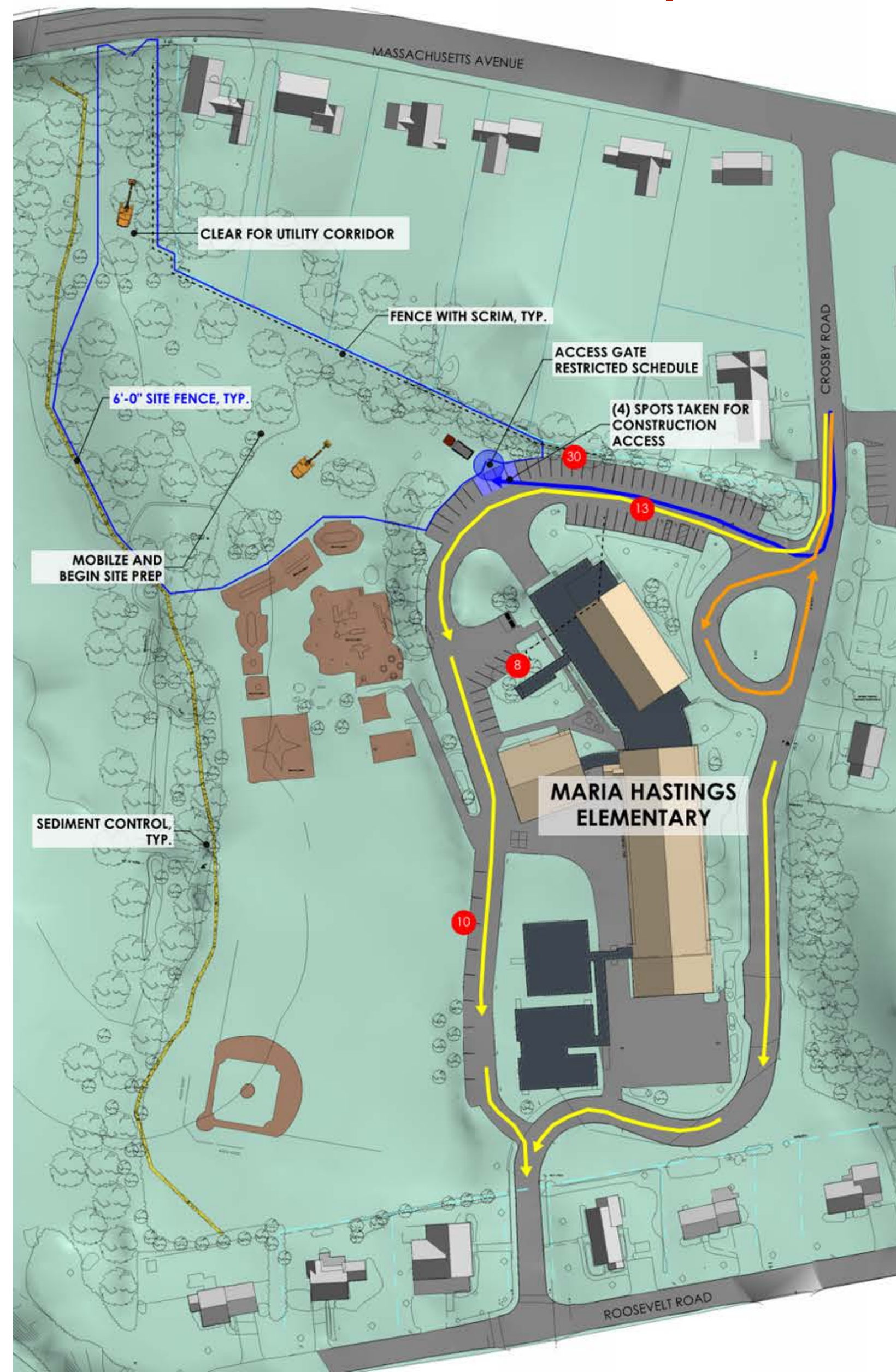
	EXISTING	CONST.	FINAL
SCHOOL	74	-	-
CHURCH	16	-	-
TOTAL SPACES	90	-	-

TRAVEL PATHS

-  BUSES & VANS
-  VEHICLES

Preliminary Logistics Plan | Early Site Work

May – June 25, 2018



PARKING MATRIX

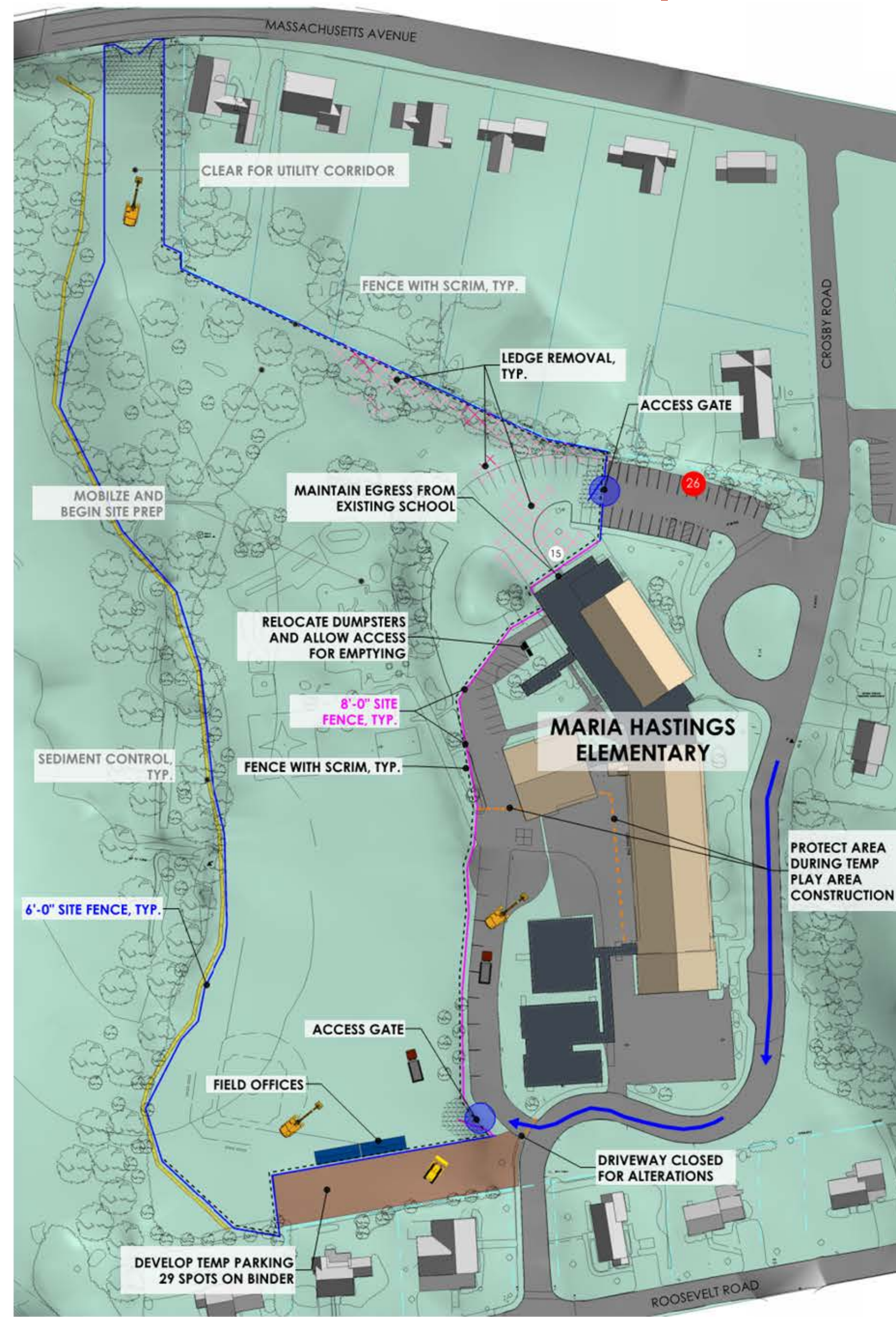
	EXISTING	CONSTR.	FINAL
SCHOOL	74	70	120
CHURCH	16	36	0
TOTAL SPACES	90	106	120

TRAVEL PATHS

-  BUSES & VANS
-  VEHICLES
-  CONSTRUCTION TRAFFIC

Preliminary Logistics Plan | Site Mobilization

June 25, 2018



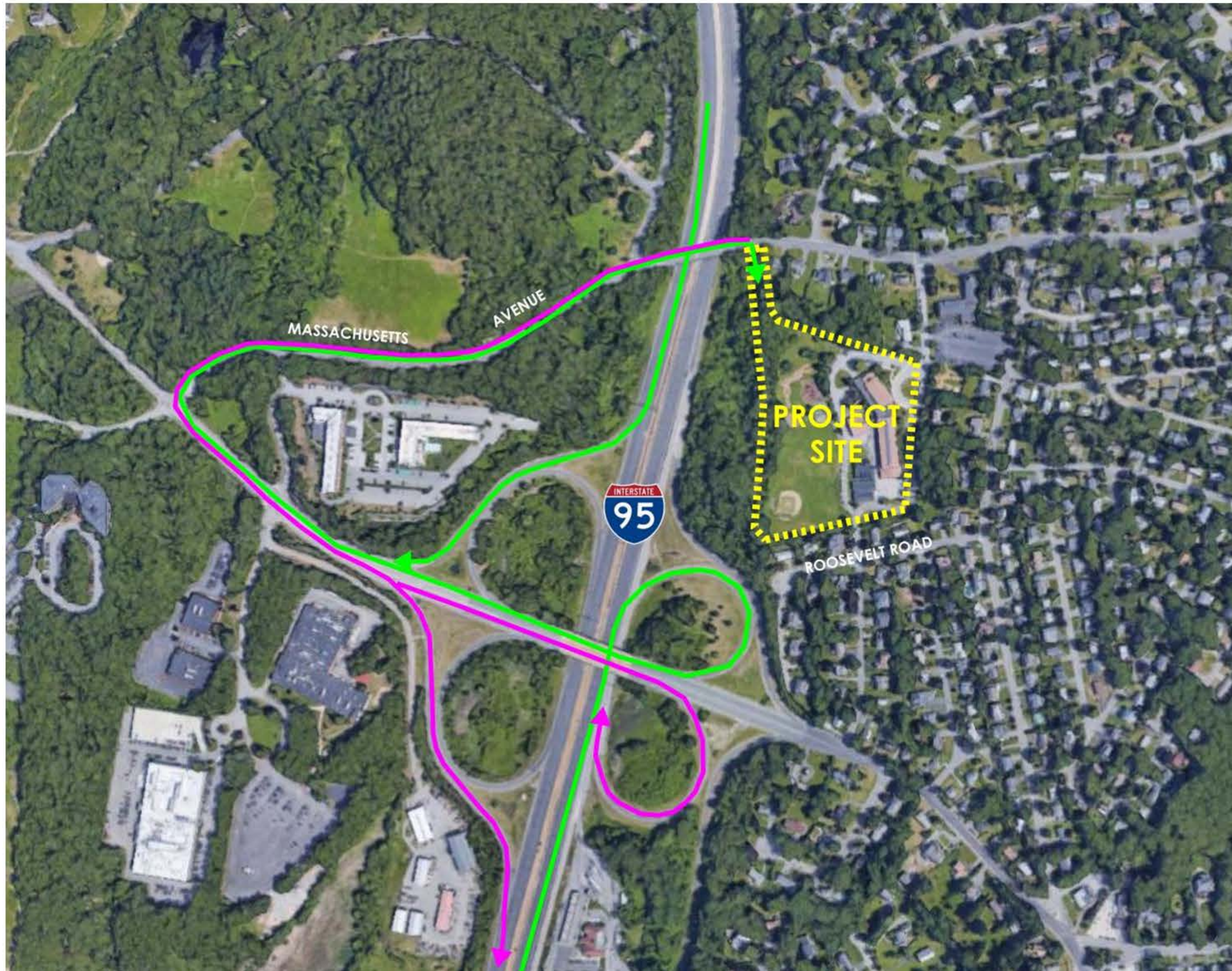
PARKING MATRIX

	EXISTING	CONSTR.	FINAL
SCHOOL	74	26	120
CHURCH	16	36	0
TOTAL SPACES	90	62	120

TRAVEL PATHS

-  BUSES & VANS
-  VEHICLES
-  CONSTRUCTION TRAFFIC

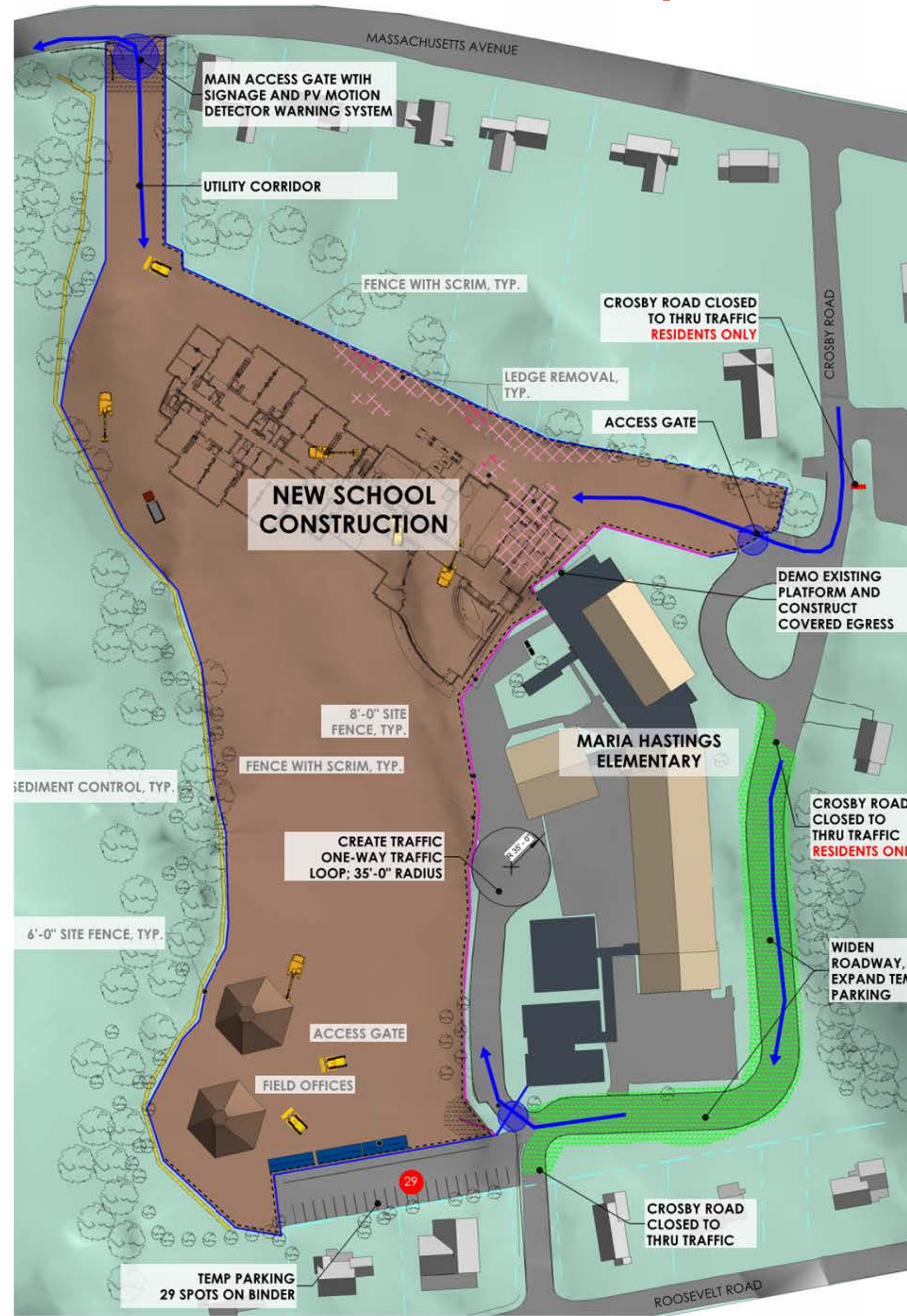
Preliminary Logistics Plan | Construction Traffic Plan



- ACCESS TO SITE
- EXITING TRAFFIC

Preliminary Logistics Plan | Construction

Summer 2018



PARKING MATRIX

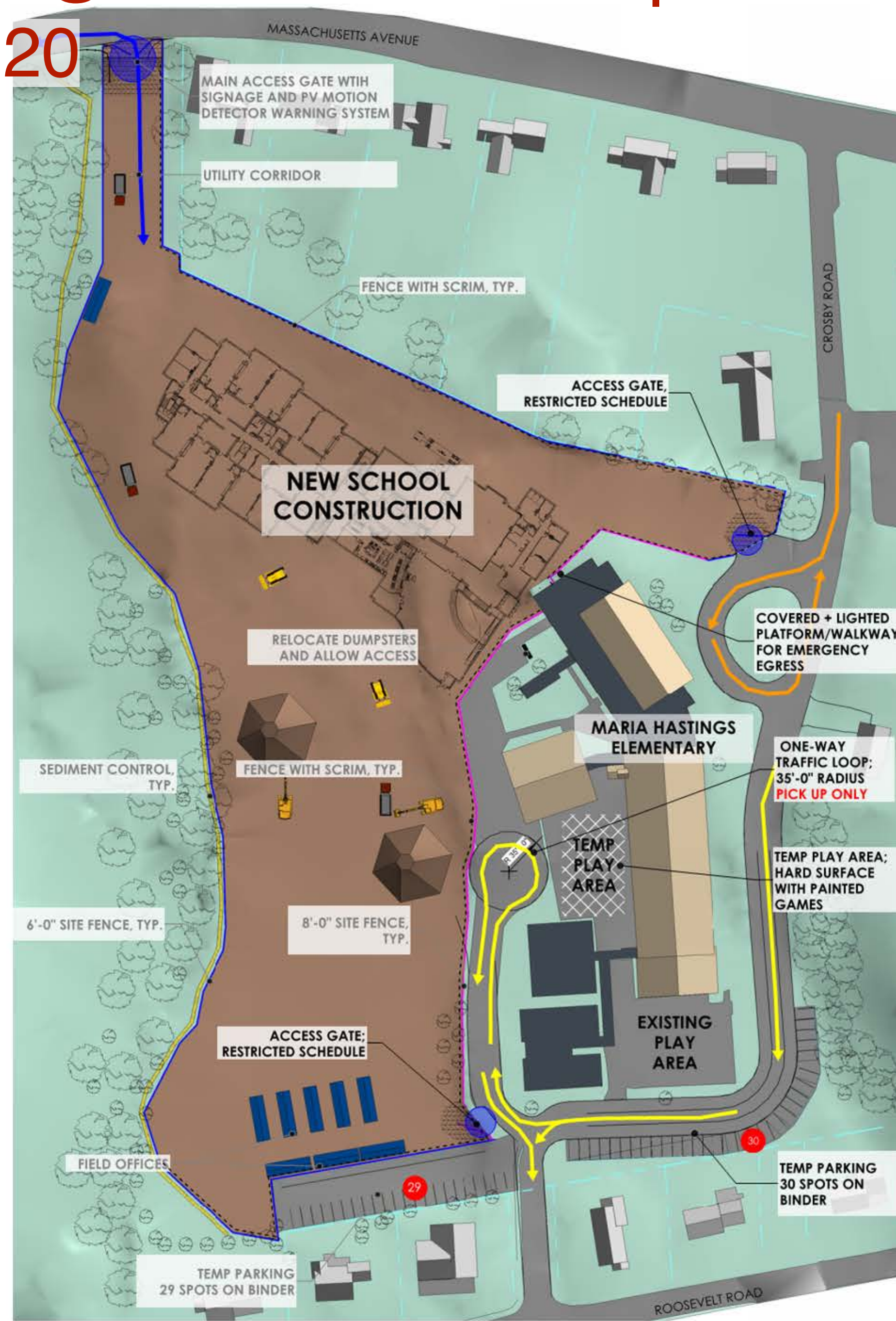
	EXISTING	CONSTR.	FINAL
SCHOOL	74	29	120
CHURCH	16	36	0
TOTAL SPACES	90	65	120

TRAVEL PATHS

- ➔ BUSES & VANS
- ➔ VEHICLES
- ➔ CONSTRUCTION TRAFFIC

Preliminary Logistics Plan | Construction


Fall 2018 – Spring 2020



PARKING MATRIX

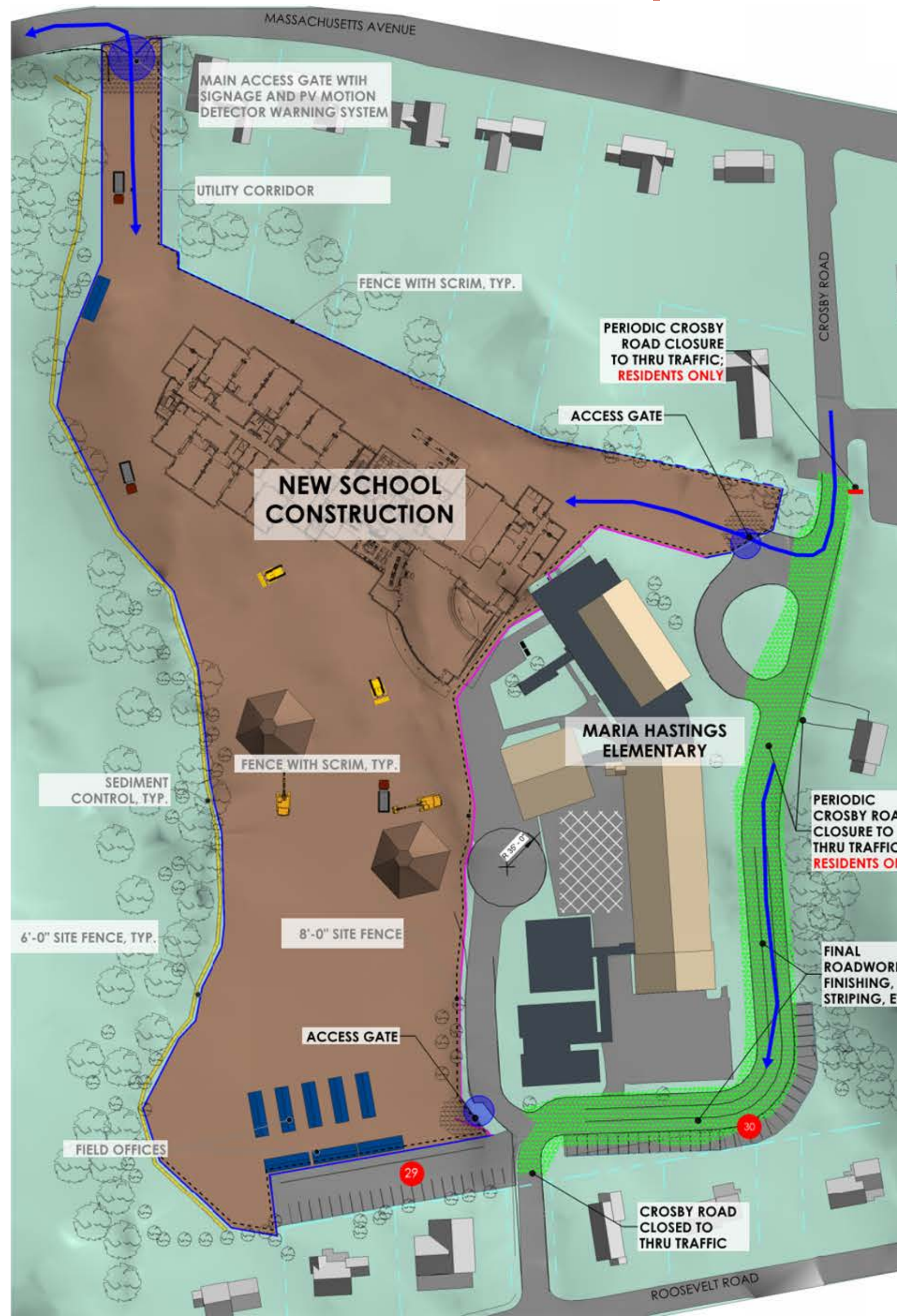
	EXISTING	CONSTR.	FINAL
SCHOOL	74	59	120
CHURCH	16	36	0
TOTAL SPACES	90	95	120

TRAVEL PATHS

-  BUSES & VANS
-  VEHICLES
-  CONSTRUCTION TRAFFIC

Preliminary Logistics Plan | Construction

Summer 2019



PARKING MATRIX

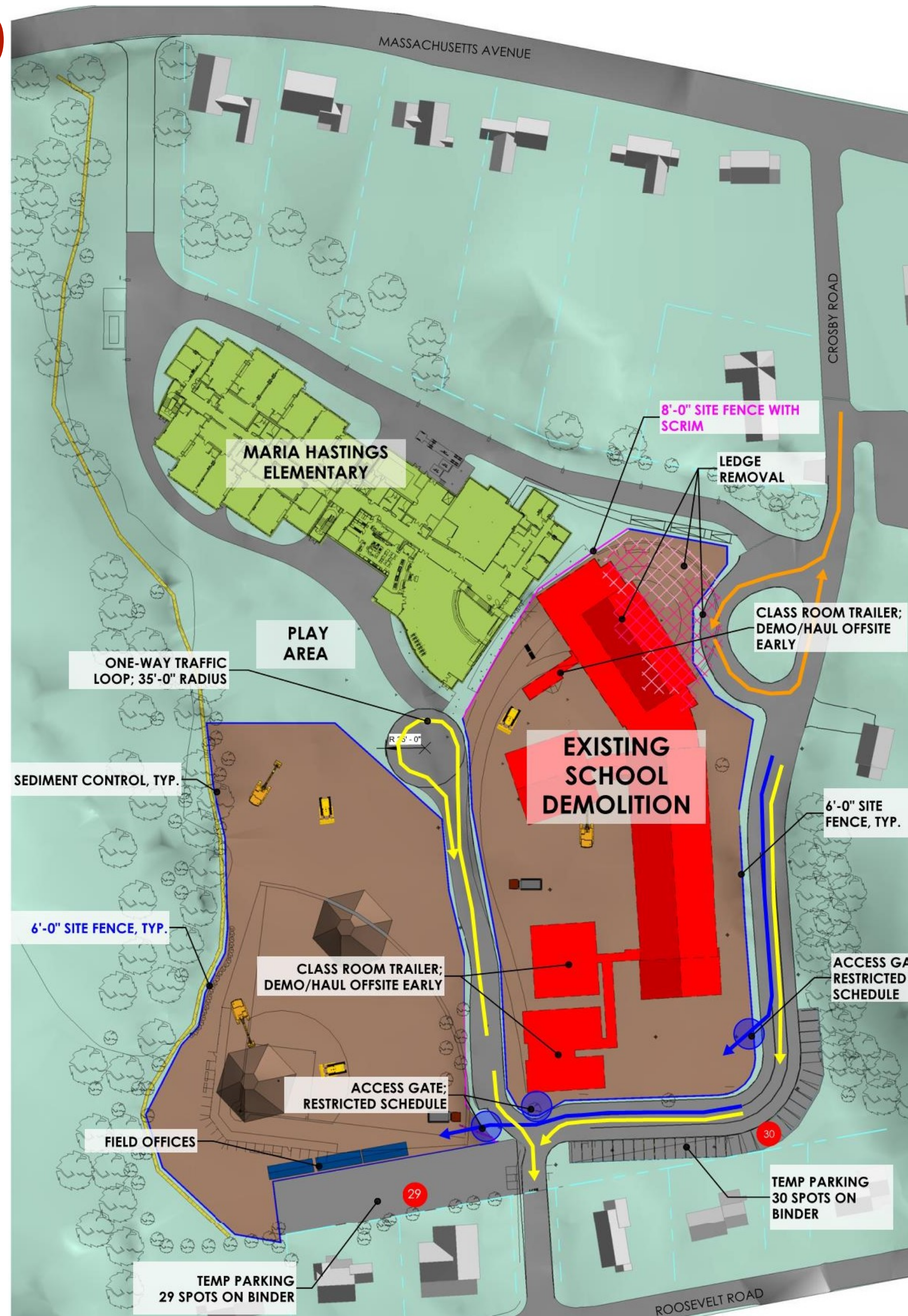
	EXISTING	CONSTR.	FINAL
SCHOOL	74	59	120
CHURCH	16	36	0
TOTAL SPACES	90	95	120

TRAVEL PATHS

-  BUSES & VANS
-  VEHICLES
-  CONSTRUCTION TRAFFIC

Preliminary Logistics Plan | Construction

February – June 2020



PARKING MATRIX

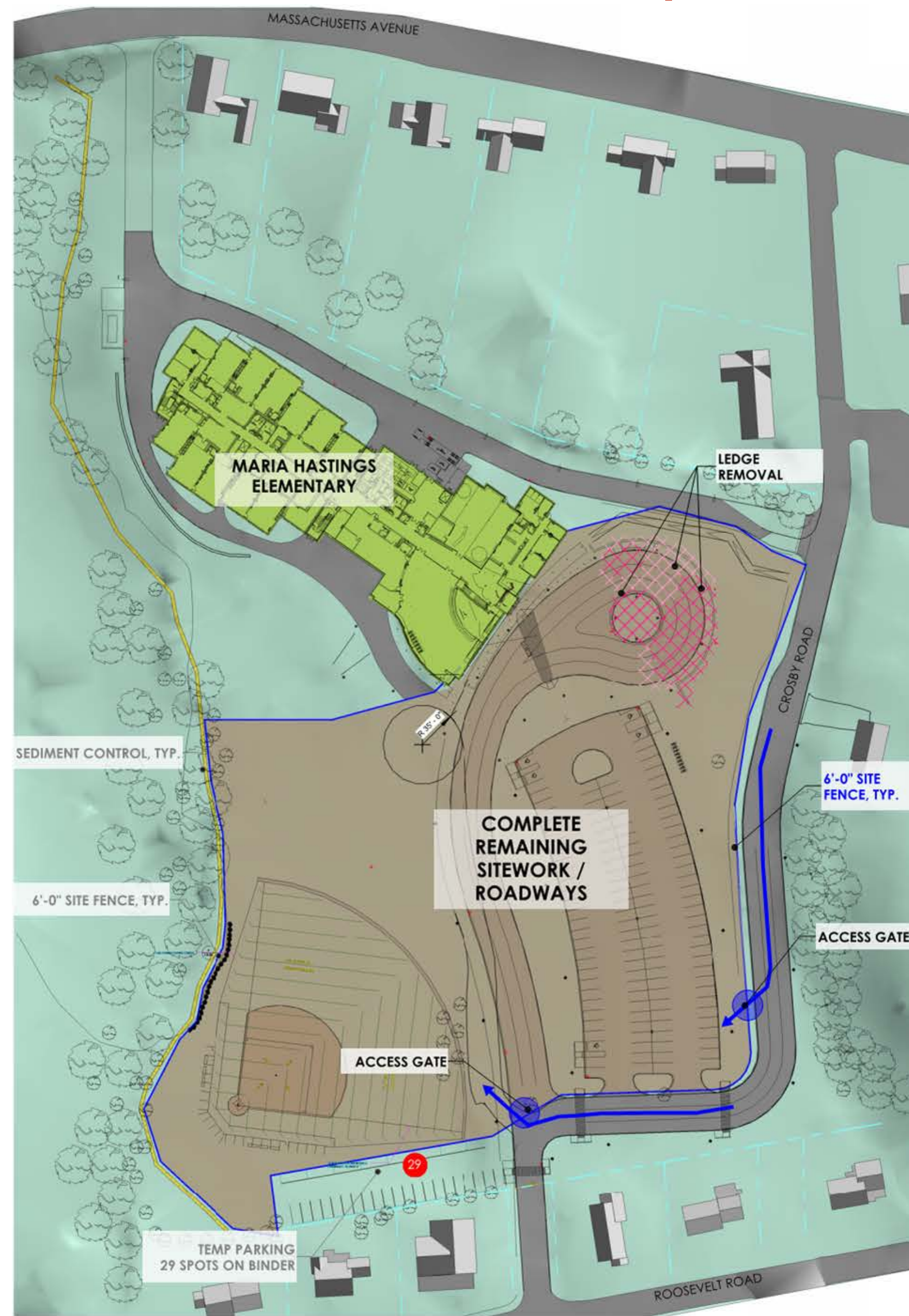
	EXISTING	CONSTR.	FINAL
SCHOOL	74	59	120
CHURCH	16	36	0
TOTAL SPACES	90	95	120

TRAVEL PATHS

- ➔ BUSES & VANS
- ➔ VEHICLES
- ➔ CONSTRUCTION TRAFFIC

Preliminary Logistics Plan | Final Sitework

June – August 2020



PARKING MATRIX

	EXISTING	CONSTR.	FINAL
SCHOOL	74	29	120
CHURCH	16	36	0
TOTAL SPACES	90	65	120

TRAVEL PATHS

➔ CONSTRUCTION TRAFFIC

Preliminary Logistics Plan | Project Complete



PARKING MATRIX

	EXISTING	CONSTR.	DELTA
SCHOOL	74	-	120
CHURCH	16	-	0
TOTAL SPACES	90	-	120

TRAVEL PATHS

-  BUSES & VANS
-  VEHICLES



Community Meeting

September 14, 2017



Maria A. Hastings Elementary School

 **DINISCO DESIGN**
architects + planners