



**PBC Meeting**  
**June 28, 2017**

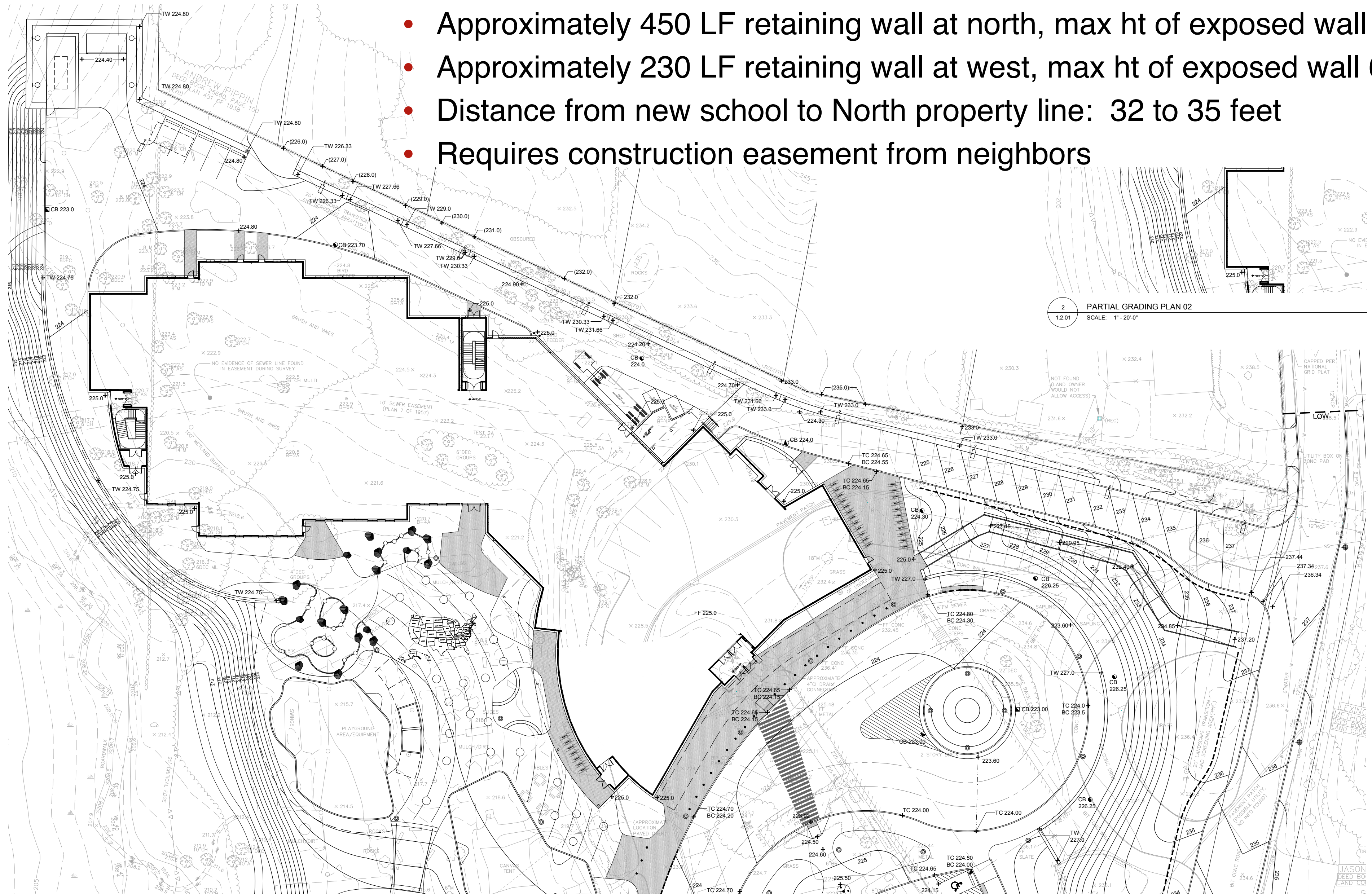


# Maria A. Hastings Elementary School

 **DINISCO DESIGN**  
architects + planners

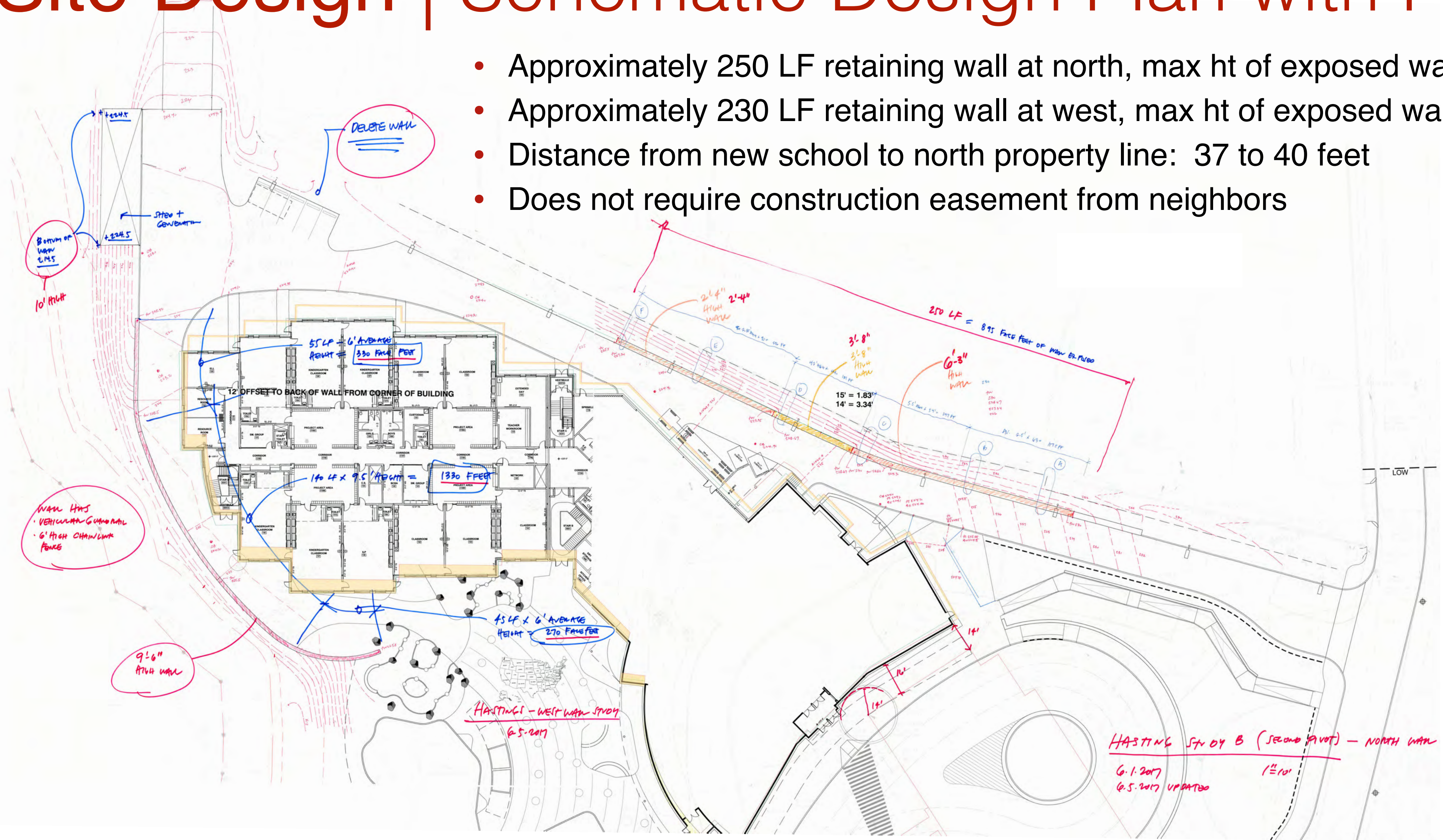
# Site Design | Schematic Design Plan

- Approximately 450 LF retaining wall at north, max ht of exposed wall 9'-0"
- Approximately 230 LF retaining wall at west, max ht of exposed wall 6'-0"
- Distance from new school to North property line: 32 to 35 feet
- Requires construction easement from neighbors



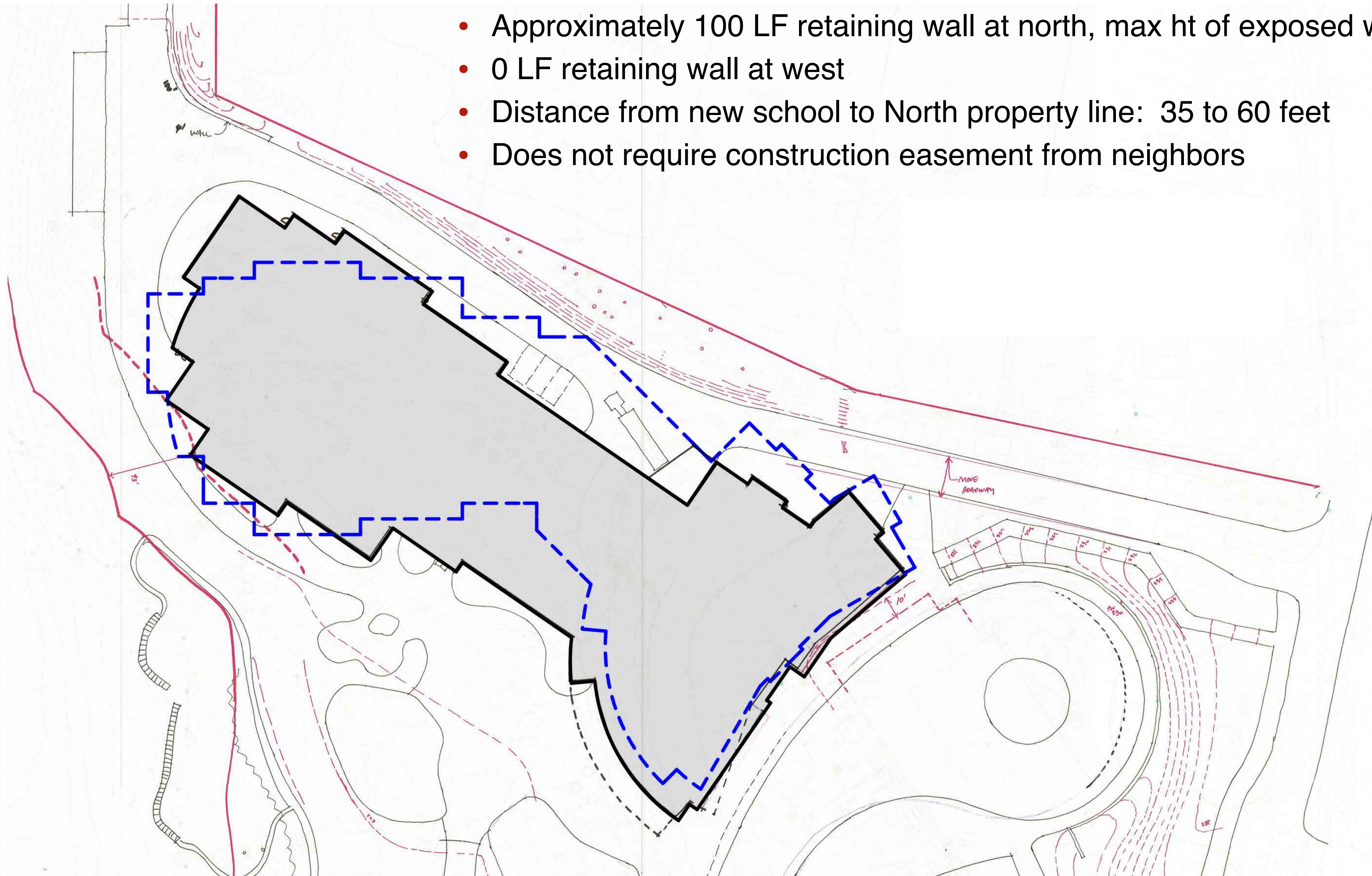
# Site Design | Schematic Design Plan with Pivot

- Approximately 250 LF retaining wall at north, max ht of exposed wall 6'-3"
- Approximately 230 LF retaining wall at west, max ht of exposed wall 9'-0"
- Distance from new school to north property line: 37 to 40 feet
- Does not require construction easement from neighbors

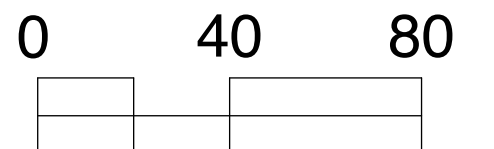
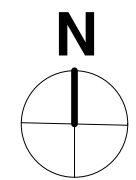
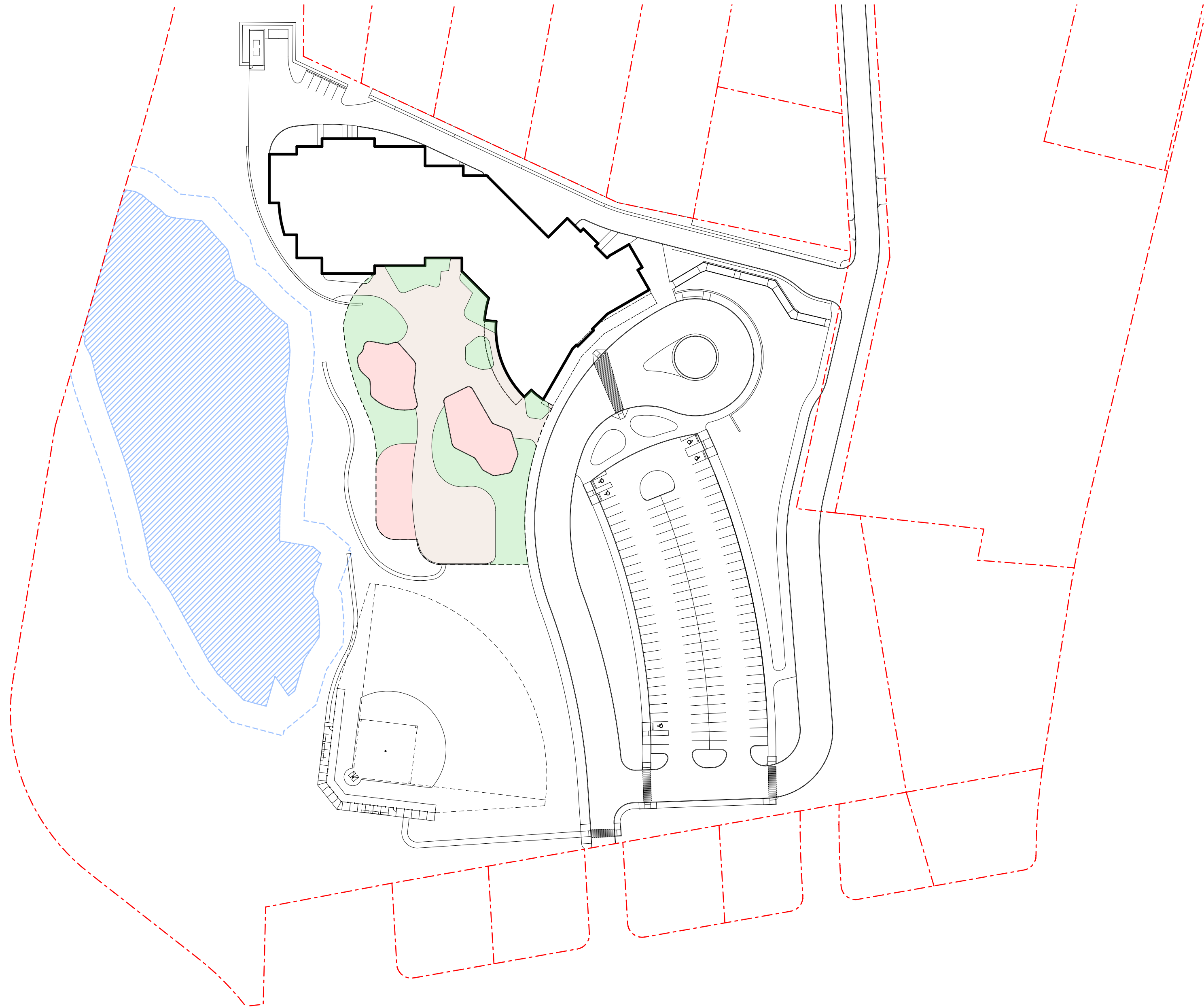


# Site Design | Revised Design Plan

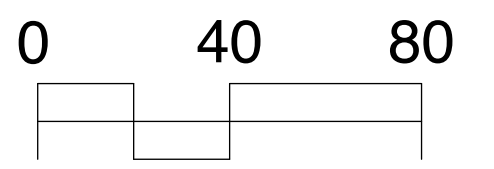
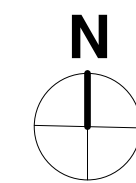
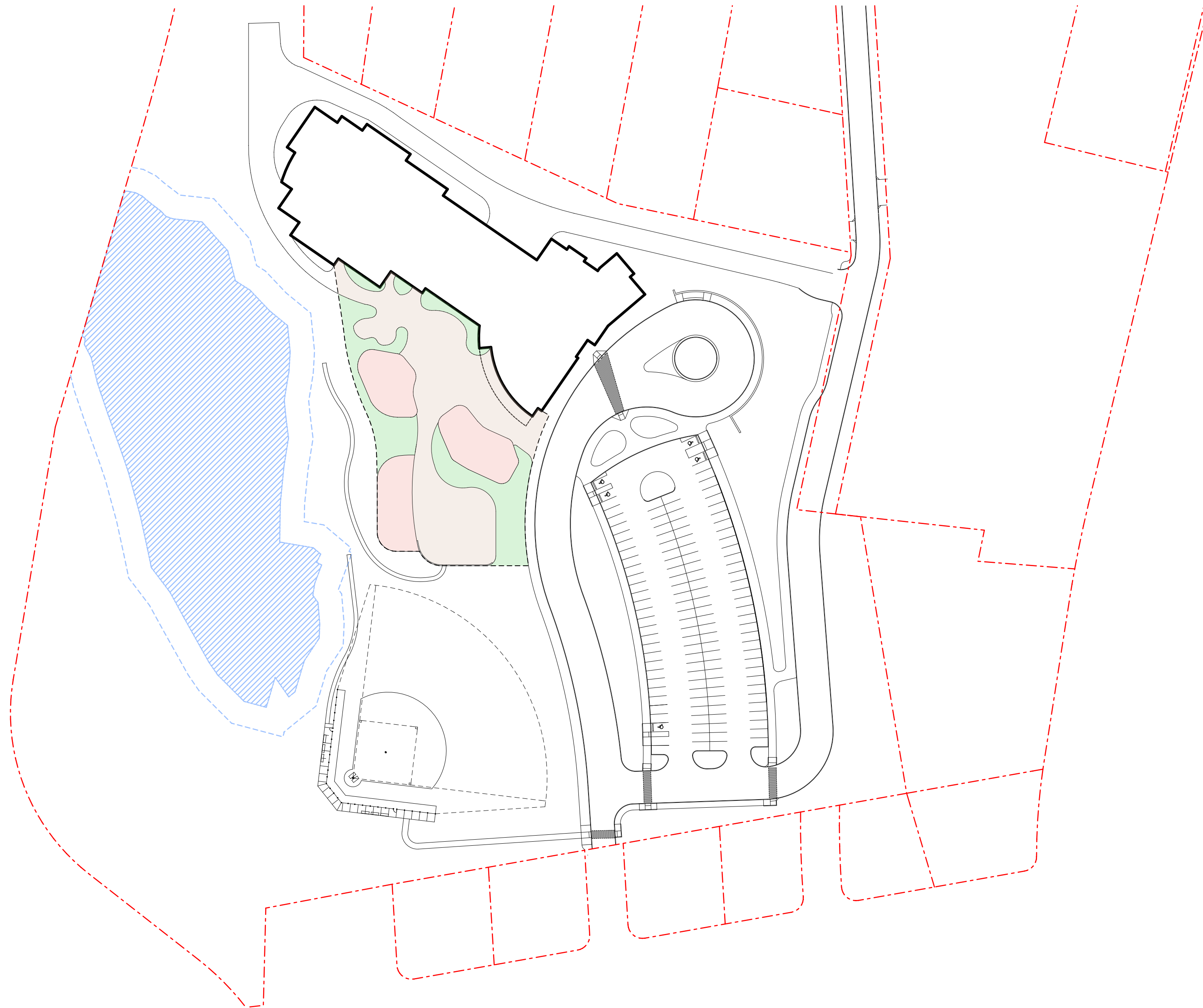
- Approximately 100 LF retaining wall at north, max ht of exposed wall 2'-4'
- 0 LF retaining wall at west
- Distance from new school to North property line: 35 to 60 feet
- Does not require construction easement from neighbors



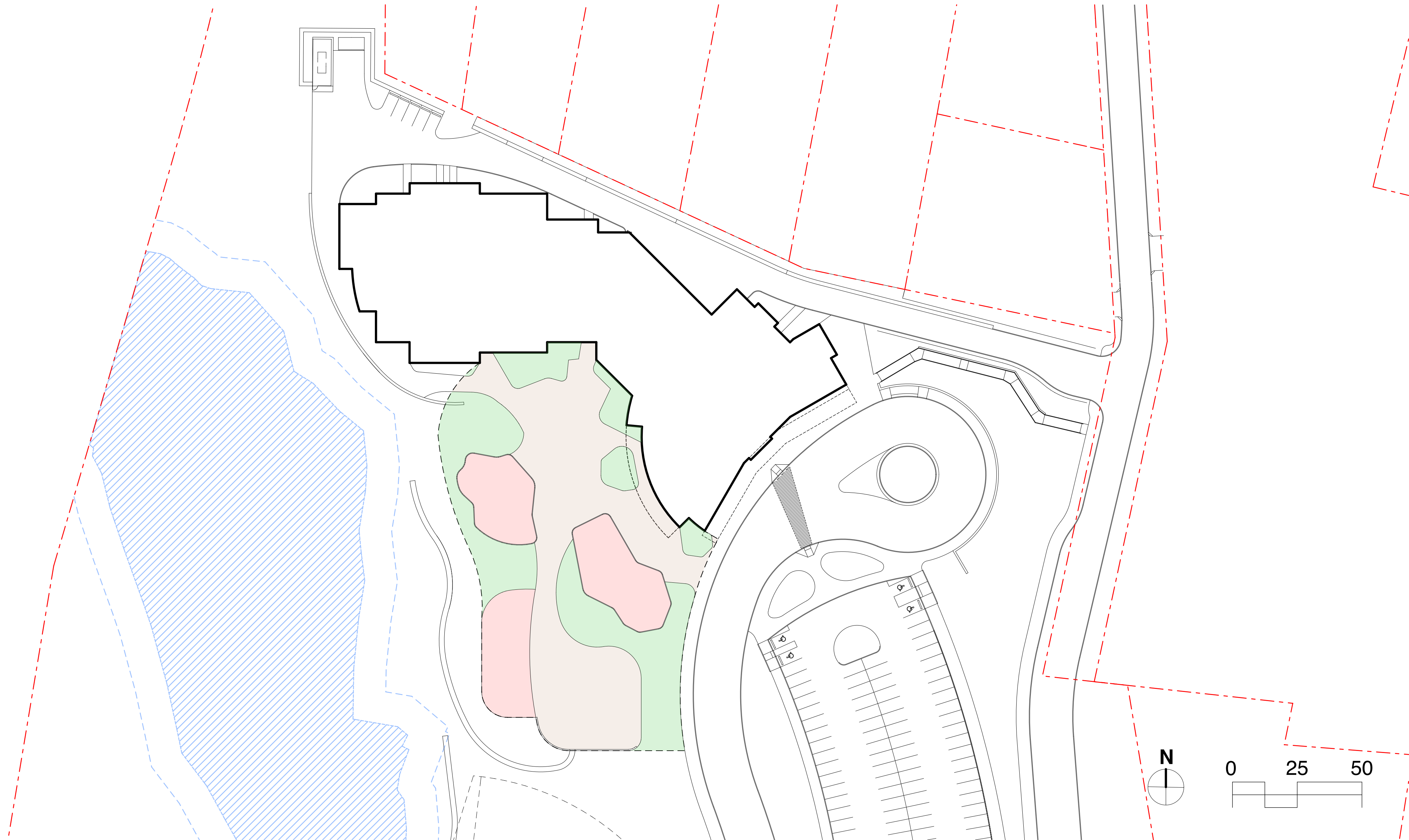
# Site Plan | Schematic Design



# Site Plan | Revised Design



# Site Plan | Schematic Design Playground

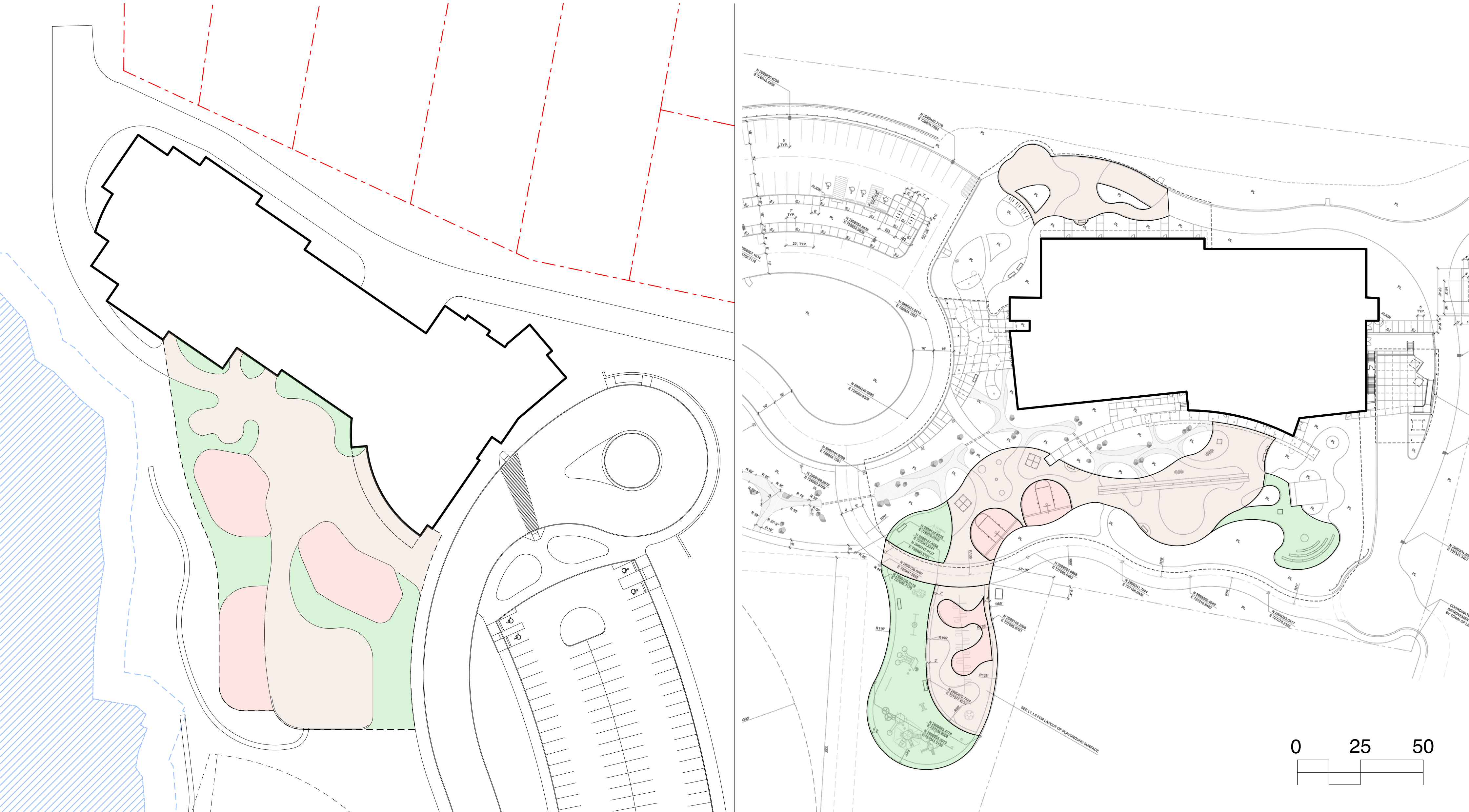


# Site Plan | Revised Design Playground





# Playground Comparison | Hastings - Estabrook



# Schematic Design | First Floor Plan



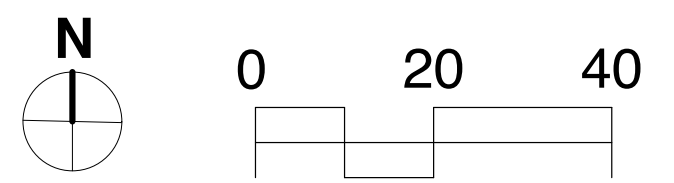
LEGEND	
[Yellow Box]	CLASSROOM
[Light Green Box]	SPECIAL EDUCATION
[Orange Box]	LIBRARY
[Purple Box]	ART/MUSIC
[Blue Box]	STAGE
[Red Box]	GYMNASIUM
[Orange Box]	KITCHEN/CAFETERIA
[Green Box]	ADMIN/EXTNDED DAY
[Brown Box]	BUILDING SERVICES

# Schematic Design | Second Floor Plan



**LEGEND**

Yellow	CLASSROOM
Light Green	SPECIAL EDUCATION
Orange	LIBRARY
Purple	ART/MUSIC
Red	GYMNASIUM
Light Green	KITCHEN/CAFETERIA
Light Green	ADMIN/EXTNDED DAY
Brown	BUILDING SERVICES



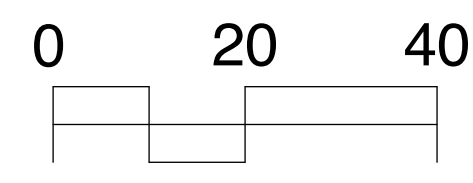
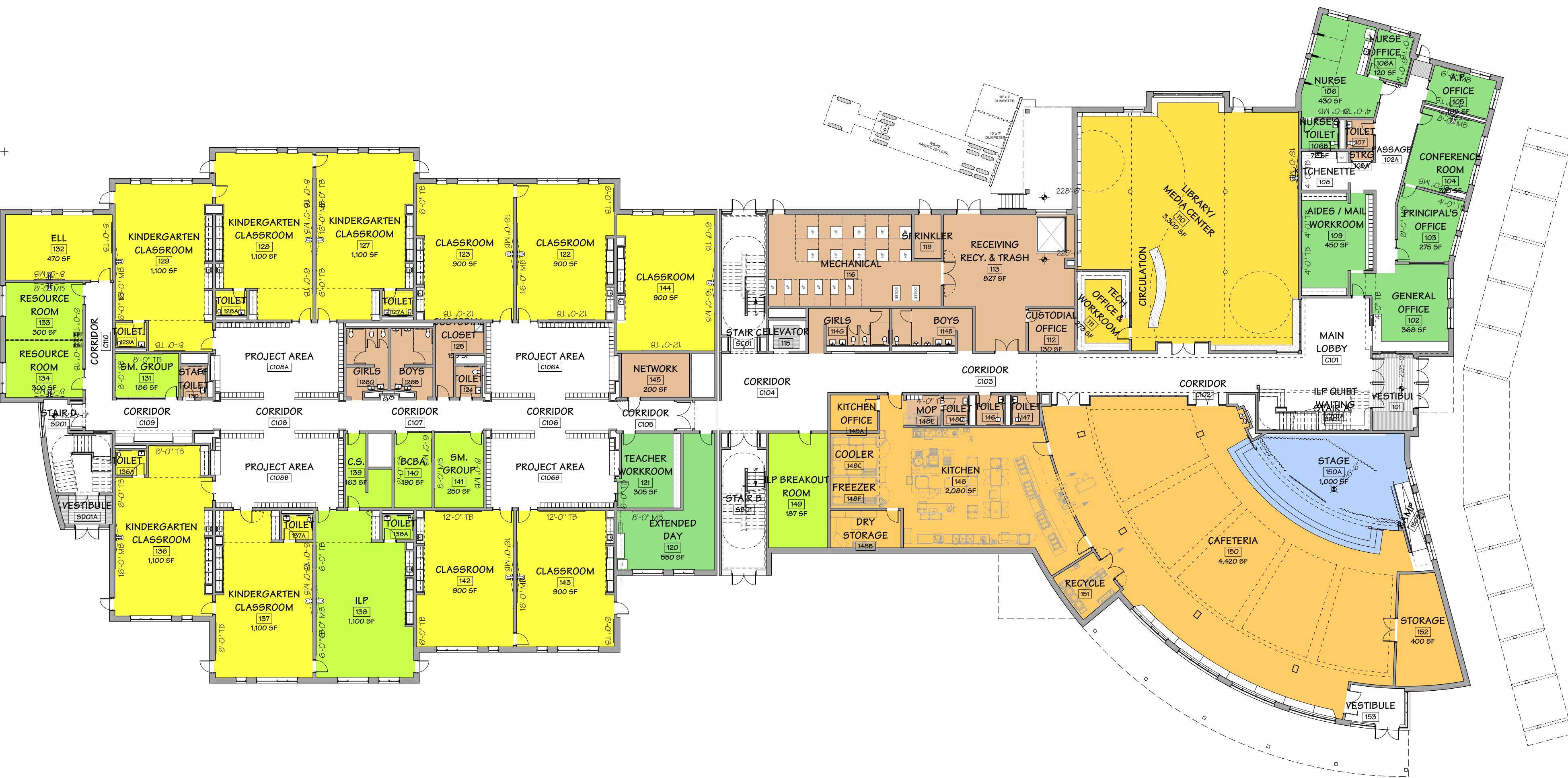
# Schematic Design | Third Floor Plan



# Revised Design | First Floor Plan

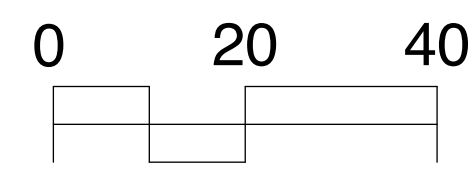
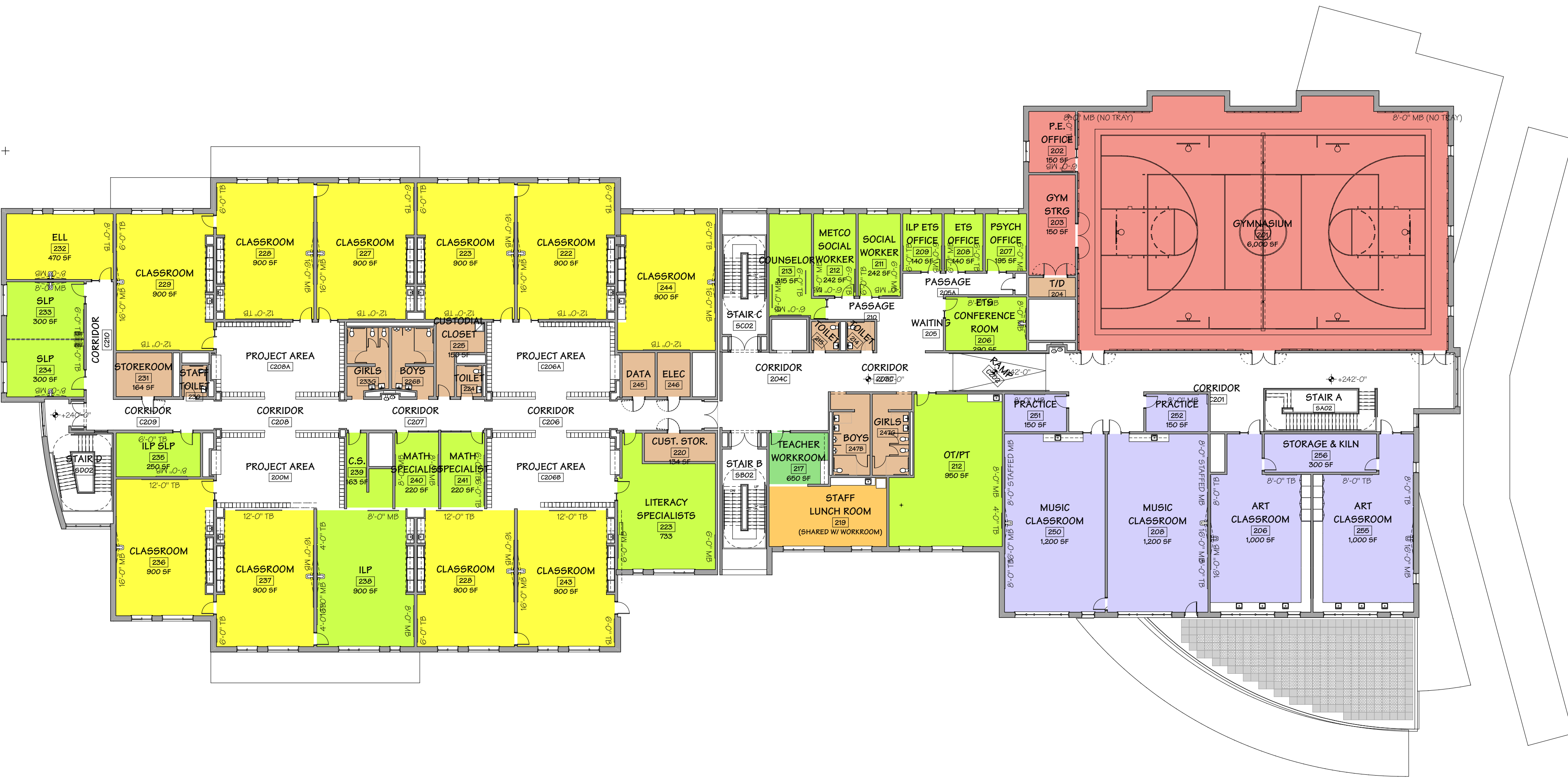
**LEGEND**

- CLASSROOM
- SPECIAL EDUCATION
- LIBRARY
- ART/MUSIC
- STAGE
- GYMNASIUM
- KITCHEN/CAFETERIA
- ADMIN/EXTNDED DAY
- BUILDING SERVICES



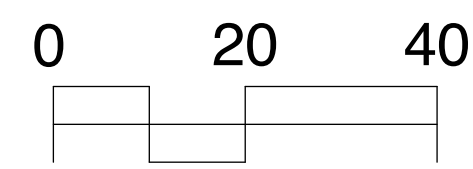
# Revised Design | Second Floor Plan

LEGEND	
<span style="display:inline-block; width:15px; height:15px; background-color:yellow;"></span>	CLASSROOM
<span style="display:inline-block; width:15px; height:15px; background-color:lightgreen;"></span>	SPECIAL EDUCATION
<span style="display:inline-block; width:15px; height:15px; background-color:orange;"></span>	LIBRARY
<span style="display:inline-block; width:15px; height:15px; background-color:lightblue;"></span>	ART/MUSIC
<span style="display:inline-block; width:15px; height:15px; background-color:blue;"></span>	STAGE
<span style="display:inline-block; width:15px; height:15px; background-color:lightcoral;"></span>	GYMNASIUM
<span style="display:inline-block; width:15px; height:15px; background-color:lightorange;"></span>	KITCHEN/CAFETERIA
<span style="display:inline-block; width:15px; height:15px; background-color:lightgreen;"></span>	ADMIN/EXTNDED DAY
<span style="display:inline-block; width:15px; height:15px; background-color:lightbrown;"></span>	BUILDING SERVICES



# Revised Design | Third Floor Plan

LEGEND	
<span style="display:inline-block; width:15px; height:15px; background-color:#ffff00;"></span>	CLASSROOM
<span style="display:inline-block; width:15px; height:15px; background-color:#90ee90;"></span>	SPECIAL EDUCATION
<span style="display:inline-block; width:15px; height:15px; background-color:#ffa500;"></span>	LIBRARY
<span style="display:inline-block; width:15px; height:15px; background-color:#9370db;"></span>	ART/MUSIC
<span style="display:inline-block; width:15px; height:15px; background-color:#6495ed;"></span>	STAGE
<span style="display:inline-block; width:15px; height:15px; background-color:#cd5c5c;"></span>	GYMNASIUM
<span style="display:inline-block; width:15px; height:15px; background-color:#ff8c00;"></span>	KITCHEN/CAFETERIA
<span style="display:inline-block; width:15px; height:15px; background-color:#32cd32;"></span>	ADMIN/EXTNDED DAY
<span style="display:inline-block; width:15px; height:15px; background-color:#d2b48c;"></span>	BUILDING SERVICES





**PBC Meeting**  
June 28, 2017



# Maria A. Hastings Elementary School