

Existing | Bowman School



- 578 students
- 65,165 GSF (incl. Modulares)
- 1967, Reno 2014
- 13.3 acres
- Wetlands
- Flood plain

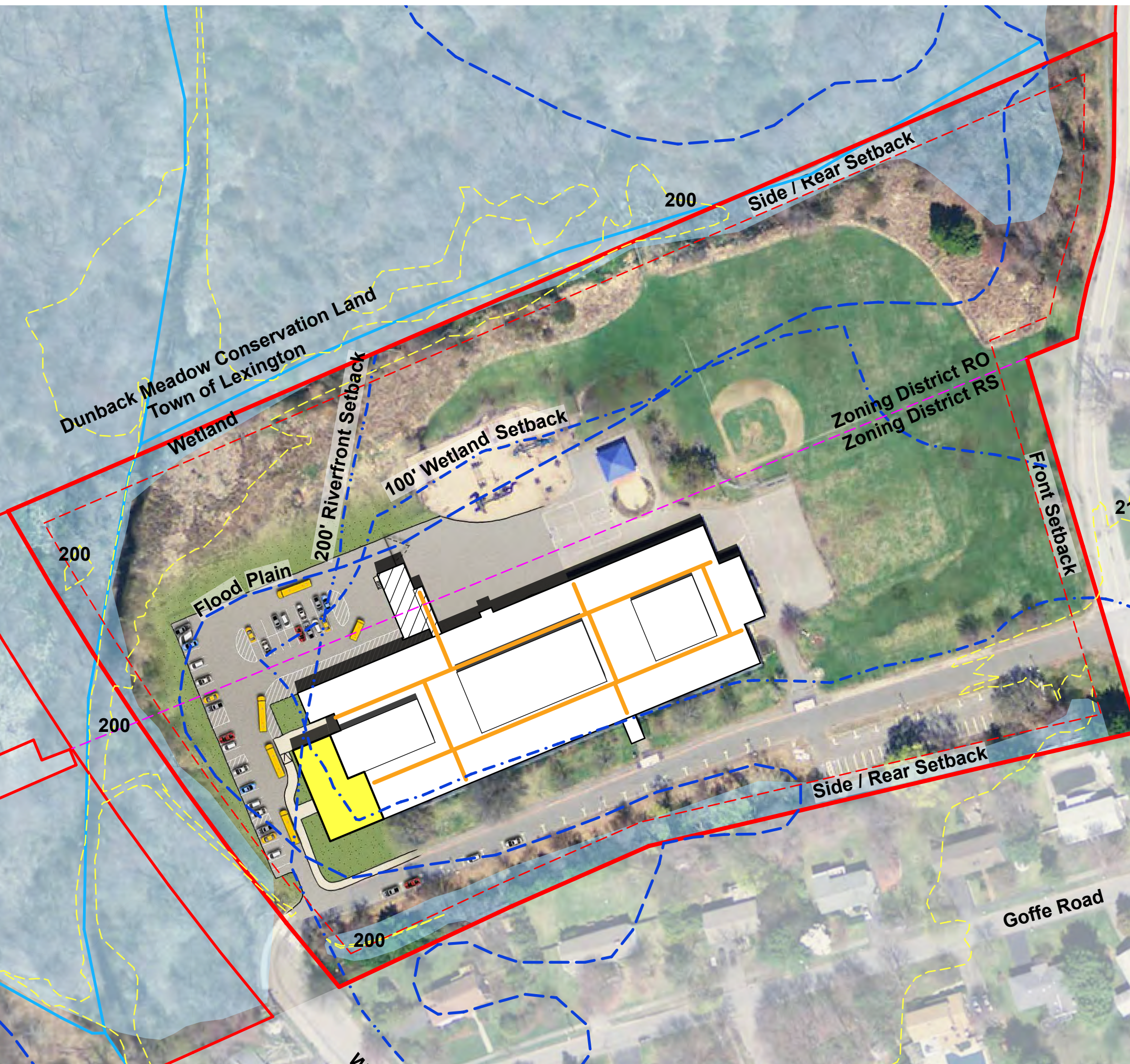


Educational Program | Bowman School

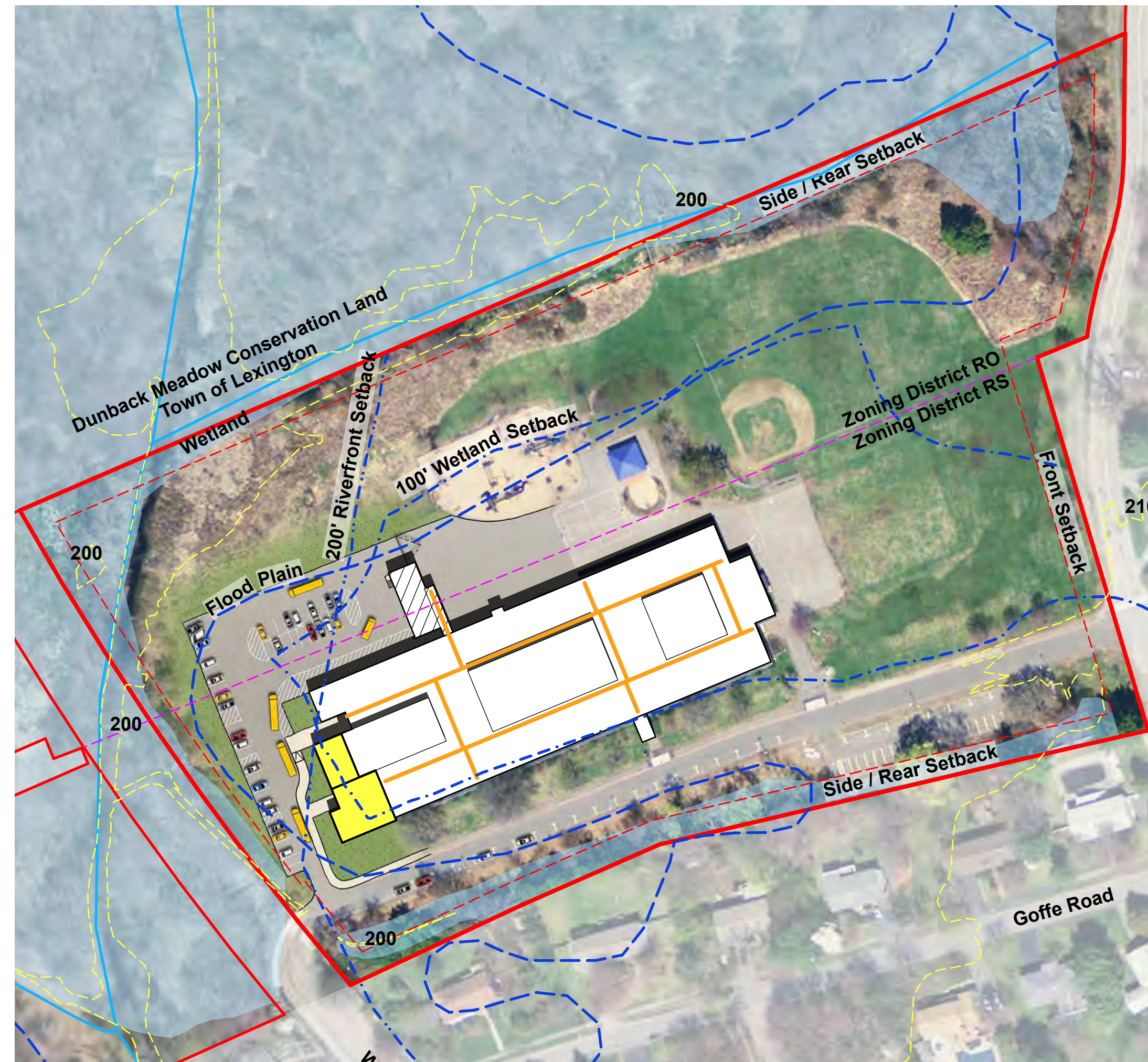
Program	FY 2016 (578 Stu) Existing		FY 2017 (602 Stu) Pre-Fab Solution		FY 2020 (518 Stu) ⁽¹⁾ After Re-districting	
	Spaces	NFA ⁽²⁾	Spaces	NFA	Spaces	NFA
Core Academic	27	22,958 SF	29	24,655 SF	24	20,442 SF
ELL	1	541 SF	1	855 SF	1	872 SF
Literacy Library		0 SF		0 SF		0 SF
Special Ed	18	4,397 SF	18	4,397 SF	21	7,841 SF
Art & Music	2	1,957 SF	3	2,896 SF	3	3,210 SF
Health & PE		3,337 SF		3,337 SF		3,337 SF
Library		2,080 SF		2,080 SF		2,080 SF
Dining / Stage		5,984 SF		5,984 SF		5,984 SF
Medical / Admin		3,536 SF		3,536 SF		3,449 SF
Custod / Maint.		901 SF		901 SF		1,339 SF
Other: Lex Day		0 SF		0 SF		87 SF
Total Program NFA		45,691 SF		48,641 SF		48,641 SF
Gross SF		65,165 SF		69,665 SF		69,665 SF

⁽¹⁾ Based upon design enrollment @ 21.6 students/classroom ⁽²⁾ Net Floor Area of program

Options | Bowman School



Consensus
(including toilets)



Option A
(including toilets)

 Pre-fab classrooms

 Pre-fab classrooms

Bowman | Preferred Pre-fab Addition Option 'A'

- Add 2 Classrooms & 1 Music Room
- \$3,273,000
- Complete Sept 2016



 Pre-fab classrooms



Evaluation Criteria | Bowman School

		July 1, 2015					Bowman	Bowman	Bowman	
							Existing	Consensus	PreFab Option A	
Item Score	Group Score	Relative Group %	Evaluation (Weight x Rating)		Rating Existing	Rating Concept	Rating Consideration			
			Positive	1 to 5						
			Neutral / Not applicable	0						
			Negative	-1 to -5						

Educational Program

General Education

Item Score	Group Score	Relative Group %	Description	Rating Existing	Rating Concept	Rating Consideration	Bowman Existing	Bowman Consensus	Bowman PreFab Option A
16	16%		Core Academic Spaces						
12	13%		Special Education						
7	5%		Art & Music						
7	5%		Health & Physical Education						
7	5%		Library						
7	5%		Dining & Food Service						
3	2%		Medical						
5	3%		Administration & Guidance						
1	1%		Custodial & Maintenance						
65	55%								

Facility

Item Score	Group Score	Relative Group %	Description	Rating Existing	Rating Concept	Rating Consideration	Bowman Existing	Bowman Consensus	Bowman PreFab Option A
4	5%		Configuration/Adjacency						
4	5%		Circulation						
5	6%		Flexibility for Future Program & Space Needs						
4	5%		Community						
3	4%		Design Compatibility (blend into existing building, lighting & other impacts)						
20	25%								

Site

Item Score	Group Score	Relative Group %	Description	Rating Existing	Rating Concept	Rating Consideration	Bowman Existing	Bowman Consensus	Bowman PreFab Option A
4	5%		LPS Traffic & Mitigation Policy						
3	4%		Playgrounds and School Fields						
2	3%		Recreation Fields/Conservation Access						
3	4%		Facility expansion capacity						
1	2%		Environmental impacts/Conservation Issues						
2	2%		Traffic/Neighborhood Impact						
15	20%								
100									

Project Construction Cost, Impacts and Schedule

Item Score	Description	Rating Existing	Rating Concept	Rating Consideration	Bowman Existing	Bowman Consensus	Bowman PreFab Option A
	Project Cost						
	Concept Estimate				\$0.0 M to \$0.0M	\$0.0 M to \$0.0M	\$0.0 M to \$0.0M
	Effective cost per added classroom						
	Delivery						
	Estimated Schedule				months	months	months
	Construction impact on School						
	Construction impact on neighborhood						
	Solution Lifespan						
	Utility / infrastructure						
	Duration Until Right Sizing/New Hastings						
	Hastings - Net town cost with MSBA participation						
	Hastings - Optimizes sustainable design						

Existing | Bridge School



- 591 students
- 62,685 GSF
- 1966, Reno 2014
- 29.5 acres
- Wetlands
- Flood plain



Educational Program | Bridge School

Program	FY 2016 (591 Stu) Existing		FY 2017 (592 Stu) Pre-Fab Solution		FY 2020 (518 Stu) ⁽¹⁾ After Re-districting	
	Spaces	NFA ⁽²⁾	Spaces	NFA	Spaces	NFA
Core Academic	26	22,662 SF	28	24,588 SF	24	20,723 SF
ELL	1	151 SF	2	997 SF	2	1,643 SF
Literacy Library		0 SF		0 SF		0 SF
Special Ed	14	3,825 SF	14	3,825 SF	18	6,412 SF
Art & Music	2	1,961 SF	3	3,214 SF	3	3,214 SF
Health & PE		3,337 SF		3,337 SF		3,337 SF
Library		2,080 SF		2,080 SF		2,080 SF
Dining / Stage		6,122 SF		6,122 SF		6,122 SF
Medical / Admin		3,001 SF		3,001 SF		3,001 SF
Custod / Maint.		763 SF		763 SF		1,395 SF
Other: Lex Day	No Program	0 SF	No Program	0 SF	No Program	0 SF
Total Program NFA		43,902 SF		47,927 SF		47,927 SF
Gross SF		62,685 SF		68,575 SF		68,575 SF

⁽¹⁾ Based upon design enrollment @ 21.6 students/classroom ⁽²⁾ Net Floor Area of program

Options | Bridge School




Consensus
(including toilets)



Option A
(including toilets)

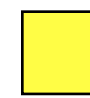
 Pre-fab classrooms

 Pre-fab classrooms

Bridge | Preferred Pre-fab Addition Option 'A'



- Add 2 Classrooms, 1 Music Room, & 1 SPED Room
- \$4,094,000
- Complete Sept 2016

 Pre-fab classrooms



Evaluation Criteria | Bridge School

		July 1, 2015		Bridge	Bridge	Bridge	
		Evaluation (Weight x Rating)		Existing	Consensus	Option A	
Item Score	Group Score	Relative Group %	Positive				
			Neutral / Not applicable	1 to 5			
			Negative	0			
				-1 to -5			
			Rating Existing	Rating Concept	Rating Consideration		

Educational Program

General Education

16	16%	Core Academic Spaces				
12	13%	Special Education				
7	5%	Art & Music				
7	5%	Health & Physical Education				
7	5%	Library				
7	5%	Dining & Food Service				
3	2%	Medical				
5	3%	Administration & Guidance				
1	1%	Custodial & Maintenance				
65		55%				

Facility

4	5%	Configuration/Adjacency				
4	5%	Circulation				
5	6%	Flexibility for Future Program & Space Needs				
4	5%	Community				
3	4%	Design Compatibility (blend into existing building, lighting & other impacts)				
20		25%				

Site

4	5%	LPS Traffic & Mitigation Policy				
3	4%	Playgrounds and School Fields				
2	3%	Recreation Fields/Conservation Access				
3	4%	Facility expansion capacity				
1	2%	Environmental impacts/Conservation Issues				
2	2%	Traffic/Neighborhood Impact				
15		20%				
100						

Project Construction Cost, Impacts and Schedule

	Project Cost				
	Concept Estimate		\$0.0 M to \$0.0M	\$0.0 M to \$0.0M	\$0.0 M to \$0.0M
	Effective cost per added classroom				
	Delivery				
	Estimated Schedule		months	months	months
	Construction impact on School				
	Construction impact on neighborhood				
	Solution Lifespan				
	Utility / infrastructure				
	Duration Until Right Sizing/New Hastings				
	Hastings - Net town cost with MSBA participation				
	Hastings - Optimizes sustainable design				

Existing | Fiske School



- 509 students
- 75,644 GSF
- 2007
- 11.7 acres
- Geothermal wells
- Study ~ 27 classrooms



Educational Program | Fiske School Pre-Fabs

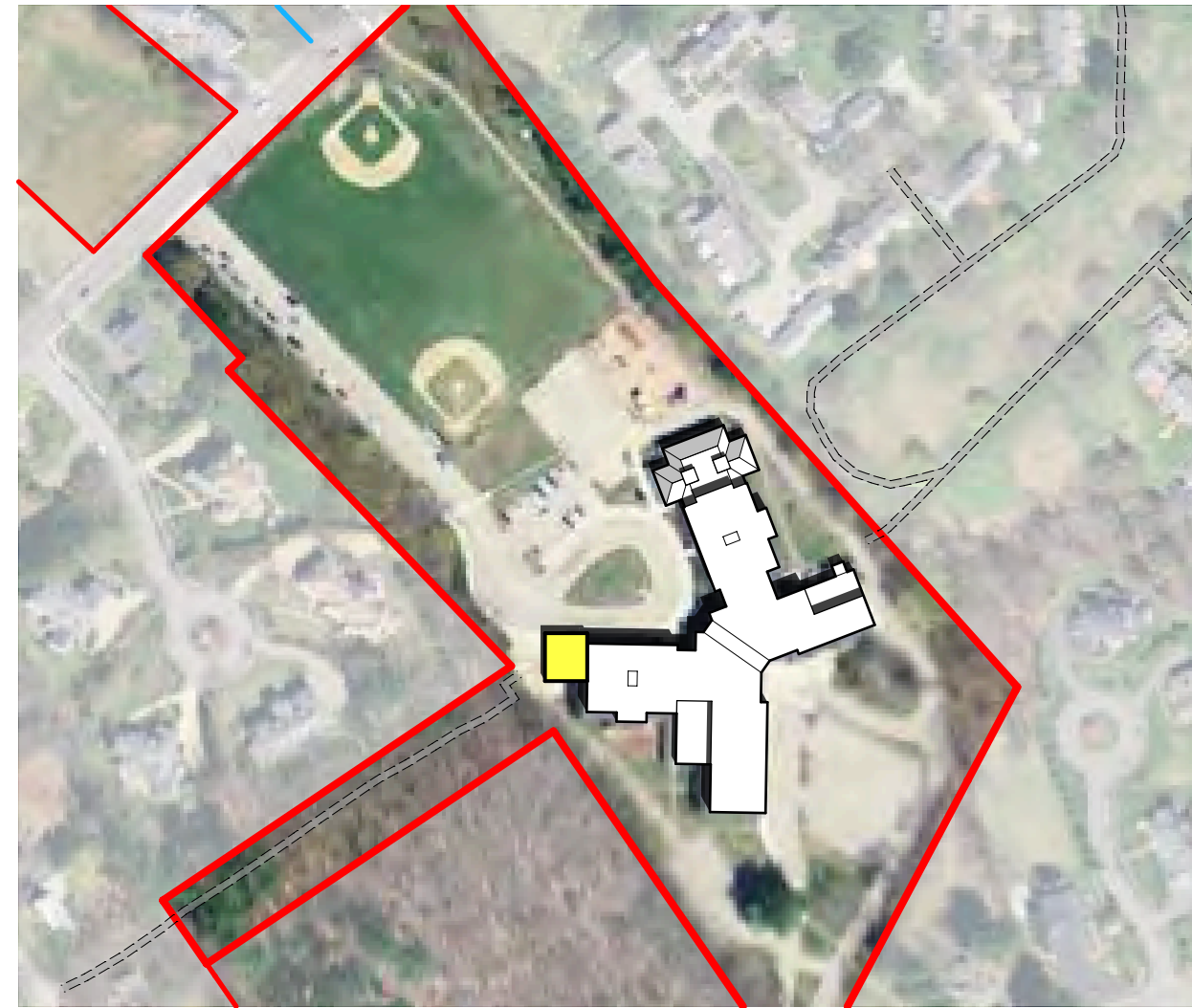
Program	FY 2016 (509 Stu) Existing		FY 2017 (475 Stu) Pre-Fab Solution		FY 2020 (518 Stu) ⁽¹⁾ After Re-districting					
	Spaces	NFA ⁽²⁾	Spaces	NFA ⁽²⁾	Spaces	NFA ⁽²⁾	Spaces	NFA ⁽²⁾	Spaces	Difference
					Program Provided		Program Required			
Core Academic	23	24,089 SF	24	25,058 SF	24	25,058 SF	24	25,058 SF	0	0 SF
ELL	2	424 SF	2	424 SF	2	424 SF	2	900 SF	0	476 SF
Literacy Library	1	222 SF	1	222 SF	1	222 SF	1	222 SF	0	0 SF
Special Ed	25	7,082 SF	25	6,826 SF	25	6,826 SF	28	8,961 SF	(3)	2,135 SF
Art & Music	1	1,748 SF	2	2,931 SF	2	2,931 SF	3	4,031 SF	(1)	1,100 SF
Health & PE		6,336 SF		6,336 SF		6,336 SF		6,336 SF	0	0 SF
Library		2,550 SF		2,550 SF		2,550 SF		2,550 SF	0	0 SF
Dining / Stage		4,883 SF		4,883 SF		4,883 SF		5,790 SF		Shortfall does not effect educational program but limits school function
Medical / Admin		2,645 SF		2,645 SF		2,645 SF		3,095 SF		
Custod / Maint.		1,607 SF		1,301 SF		1,301 SF		1,751 SF		
Other: Lex Day		151 SF		151 SF		151 SF		500 SF		
Total Program NFA		51,737 SF		53,327 SF		53,327 SF		59,194 SF		
Gross SF		75,644 SF		78,344 SF		78,344 SF		87,145 SF ⁽³⁾		8,801 SF

⁽¹⁾ Based upon design enrollment @ 21.6 students/classroom ⁽²⁾ Net Floor Area of program ⁽³⁾ Grossing factor of 1.5 x program

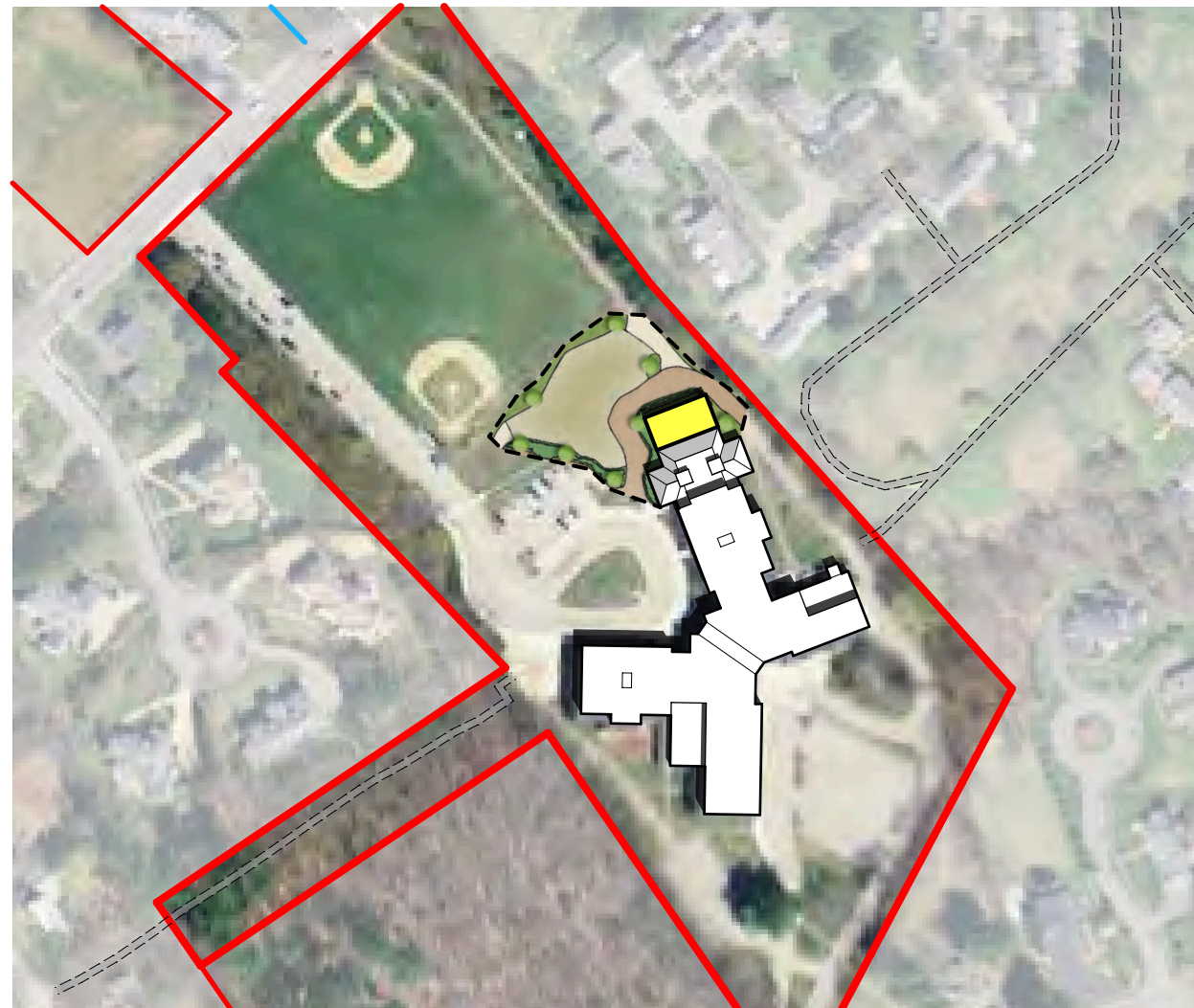
Options | Fiske School



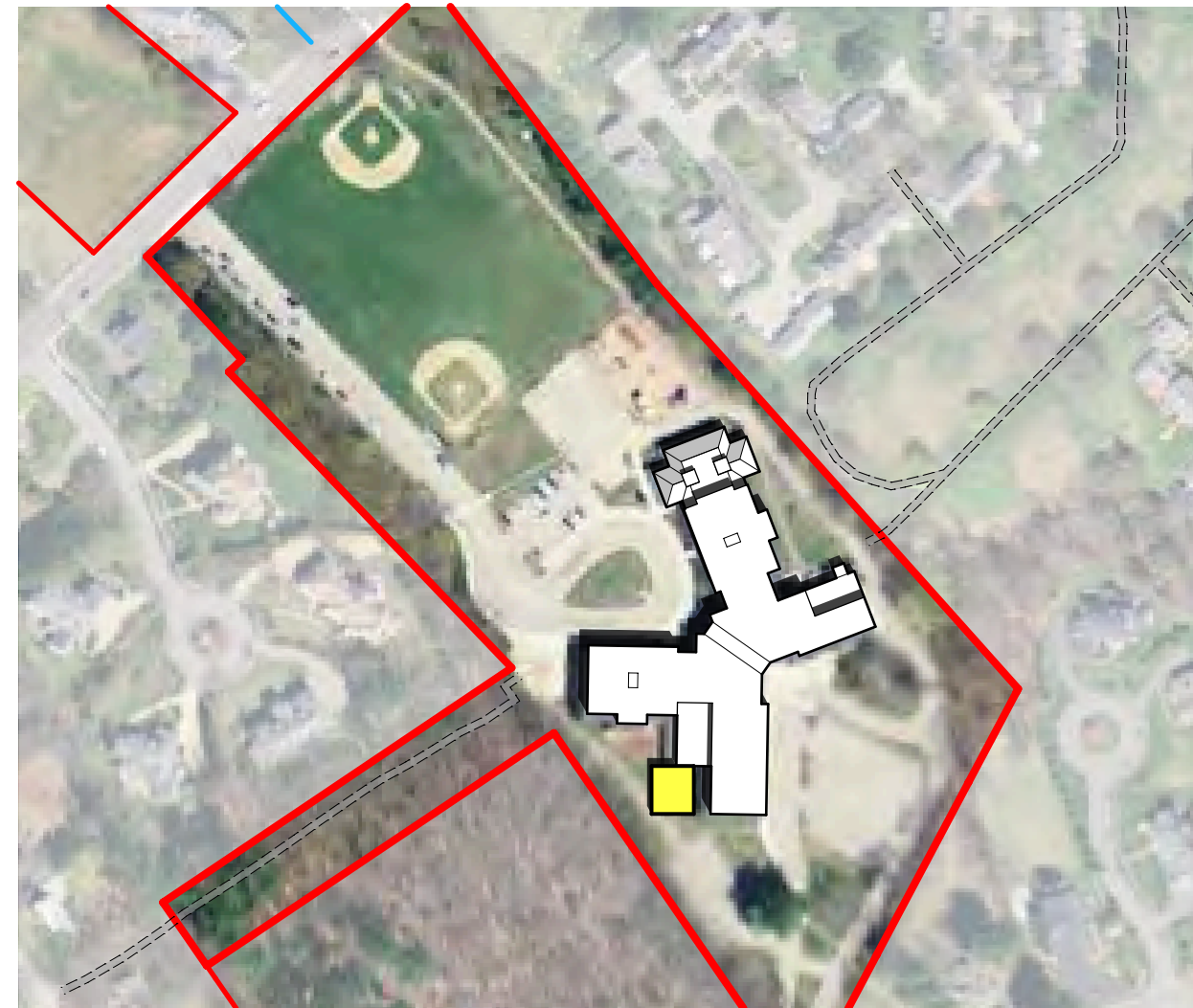
Pre-Fab Consensus



Pre-Fab Option 'B'



Pre-Fab Option 'A' - Preferred

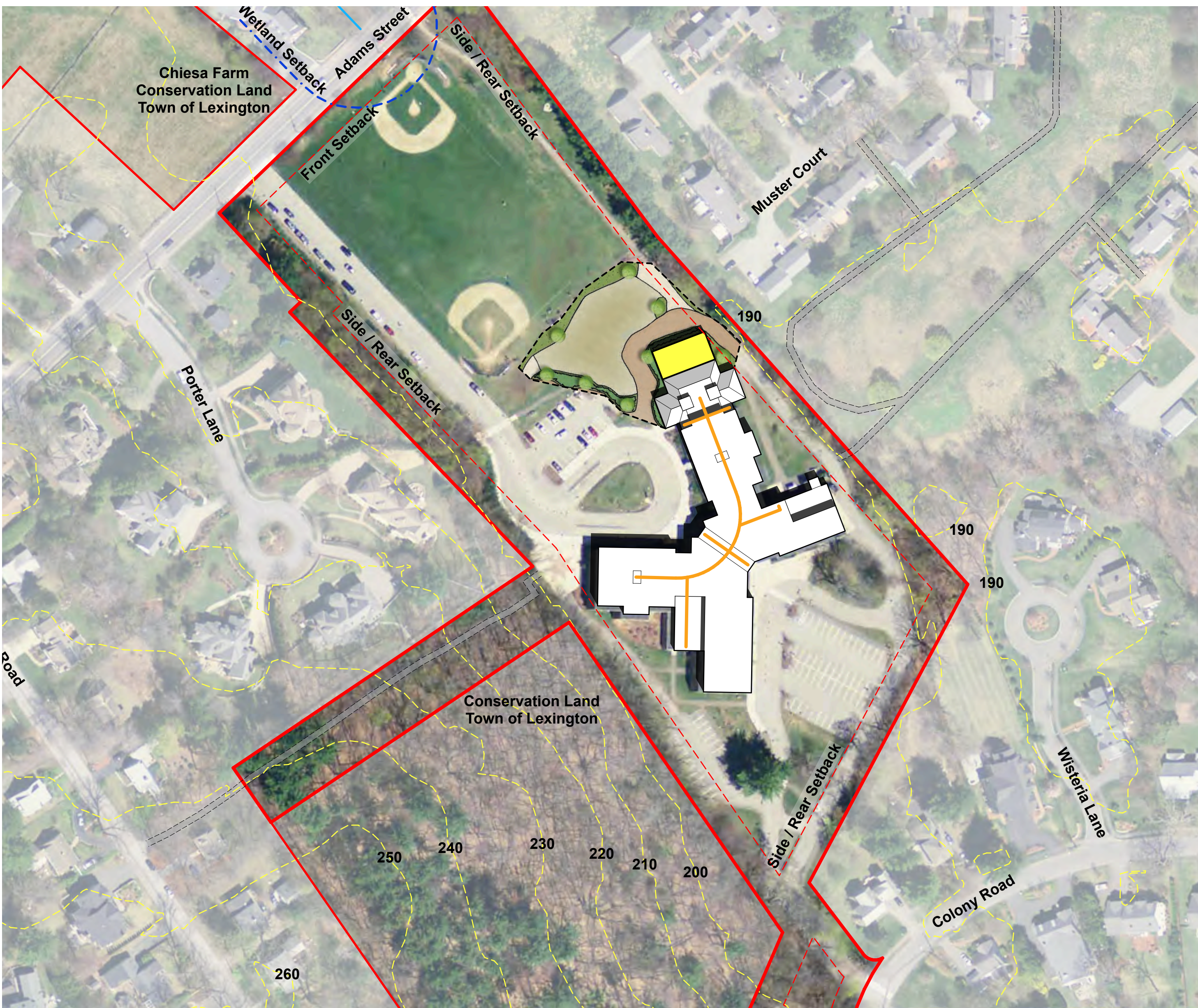


Pre-Fab Option 'C'

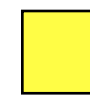


 Pre-fab classrooms

Fiske I Preferred Pre-fab Addition Option 'A'



- Add 2 Kindergarten CR
- \$2,773,000
- Complete Sept 2016

 Pre-fab classrooms



Educational Program | Fiske School Expansion

Program	FY 2016 (509 Stu) Existing		FY 2020 (518 Stu) After Re-districting Future Expansion	
	Spaces	NFA	Spaces	NFA
Core Academic	23	24,089 SF	24	24,619 SF
ELL	2	424 SF	2	846 SF
Literacy Library	1	222 SF	1	222 SF
Special Ed	25	7,082 SF	26	9,299 SF
Art & Music	1	1,748 SF	3	3,730 SF
Health & PE		6,336 SF		6,336 SF
Library		2,550 SF		2,550 SF
Dining / Stage		4,883 SF		6,183 SF
Medical / Admin		2,645 SF		3,224 SF
Custod / Maint.		1,607 SF		1,437 SF
Other: Lex Day		151 SF		189 SF
Total Program NFA		51,737 SF		58,635 SF
Gross SF		75,644 SF		89,744 SF

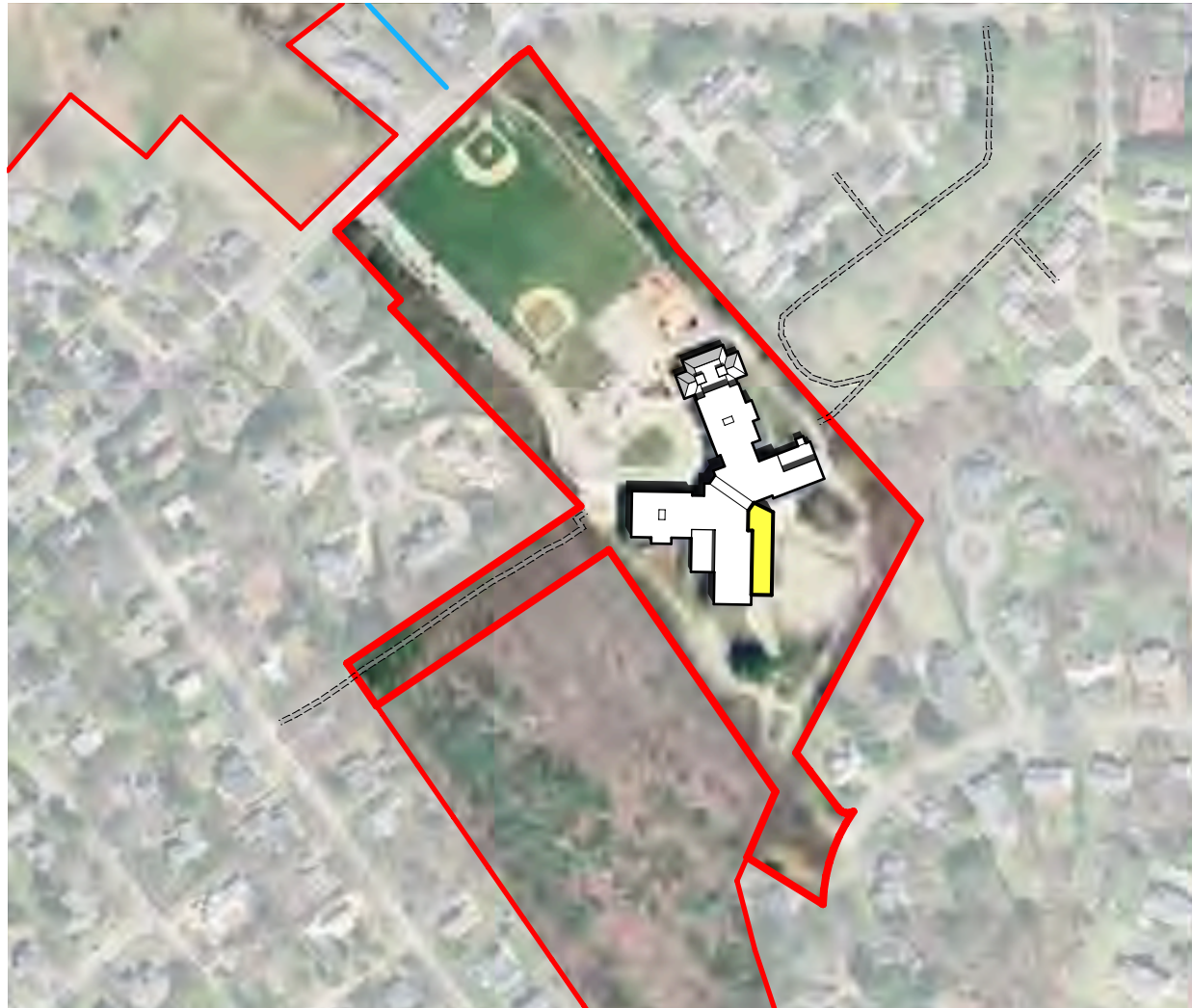
Fiske I Expansion Options



Expansion Consensus



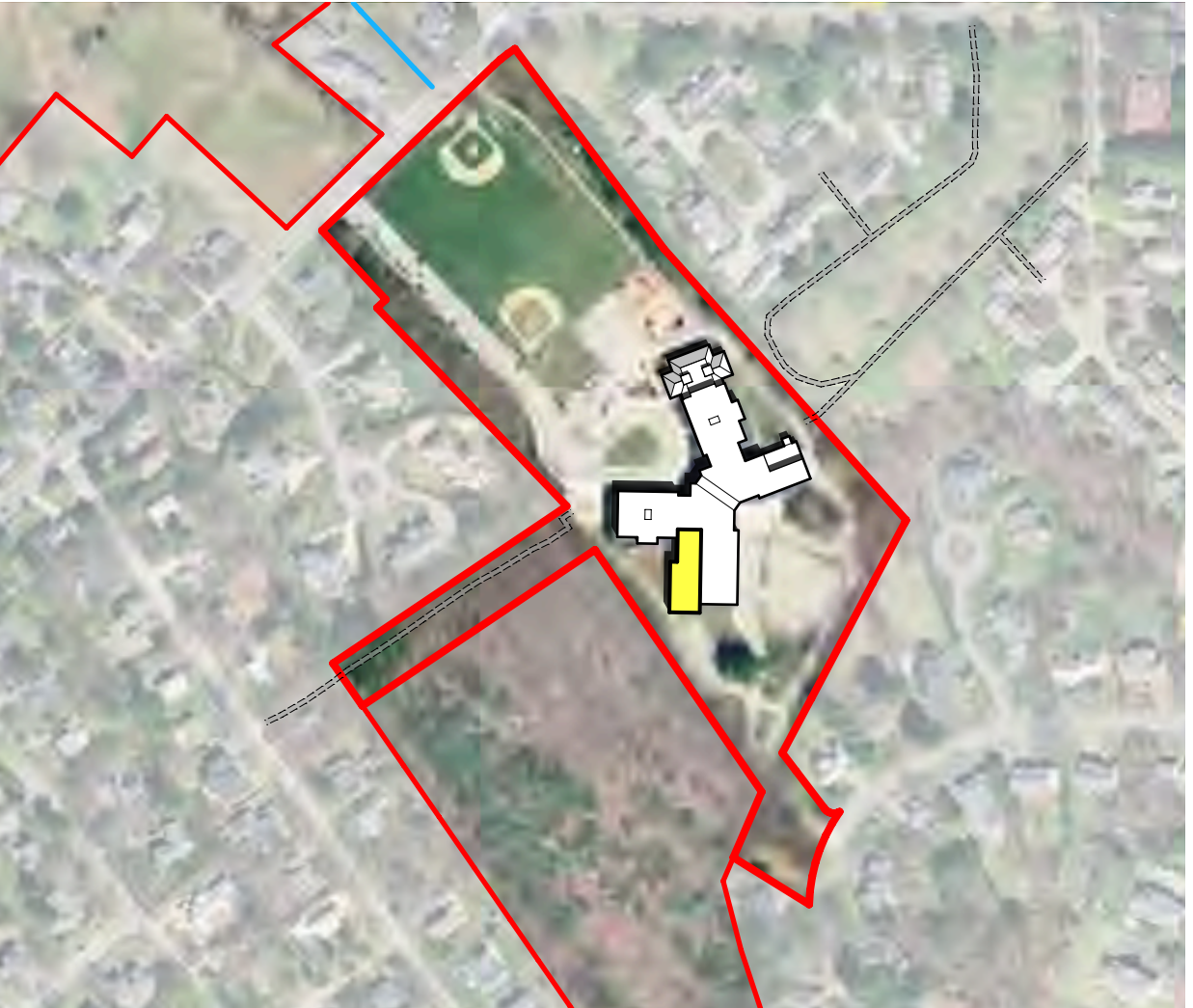
Expansion Option 'B'



Expansion Option 'D'



Expansion Option 'A' - Preferred



Expansion Option 'C'



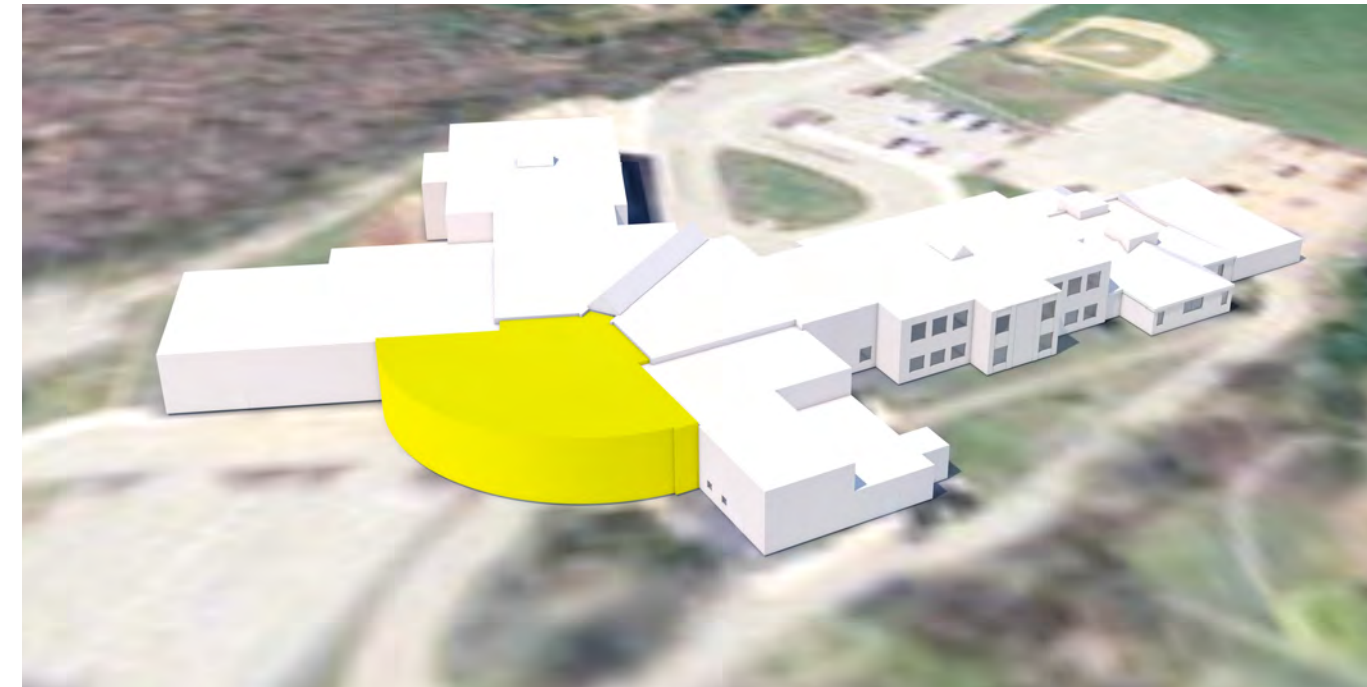
 Brick & Mortar Addition

Fiske | Preferred Expansion Option 'A'



- Provides core academic, special education and art & music spaces
- \$9,064,000
- Complete Sept 2017

 Brick & Mortar Addition



Evaluation Criteria | Fiske School

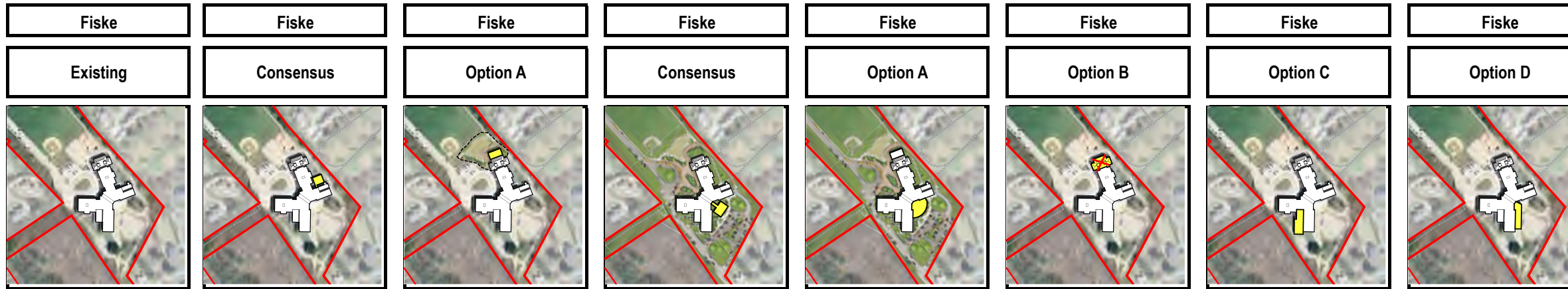
Elementary Schools - FISKE - PRE-FAB

Elementary Schools - FISKE - EXPANSION

July 1, 2015

Item Score	Group Score	Relative Group %
Evaluation (Weight x Rating)		
		1 to 5
		0
		-1 to -5

Rating Existing	Rating Concept	Rating Consideration
-----------------	----------------	----------------------



Educational Program

General Education

16	16%	Core Academic Spaces
12	13%	Special Education
7	5%	Art & Music
7	5%	Health & Physical Education
7	5%	Library
7	5%	Dining & Food Service
3	2%	Medical
5	3%	Administration & Guidance
1	1%	Custodial & Maintenance
65	55%	

Facility

4	5%	Configuration/Adjacency
4	5%	Circulation
5	6%	Flexibility for Future Program & Space Needs
4	5%	Community
3	4%	Design Compatibility (blend into existing building, lighting & other impacts)
20	25%	

Site

4	5%	LPS Traffic & Mitigation Policy
3	4%	Playgrounds and School Fields
2	3%	Recreation Fields/Conservation Access
3	4%	Facility expansion capacity
1	2%	Environmental impacts/Conservation Issues
2	2%	Traffic/Neighborhood Impact
15	20%	
100		

Project Construction Cost, Impacts and Schedule

	Project Cost	
	Concept Estimate	
	Effective cost per added classroom	
	Delivery	
	Estimated Schedule	
	Construction impact on School	
	Construction impact on neighborhood	
	Solution Lifespan	
	Utility / infrastructure	
	Duration Until Right Sizing/New Hastings	
	Hastings - Net town cost with MSBA participation	
	Hastings - Optimizes sustainable design	

		\$0.0 M to \$0.0M	\$0.0 M to \$0.0M	\$0.0 M to \$0.0M	\$0.0 M to \$0.0M	\$0.0 M to \$0.0M	\$0.0 M to \$0.0M	\$0.0 M to \$0.0M	\$0.0 M to \$0.0M
		months	months	months	months	months	months	months	months