

# LEXINGTON PUBLIC SCHOOLS

Ad hoc Schools Master Plan Committee  
Elementary Concepts

# AGENDA

## 1. Educational Plan: District Wide

- Big Picture Thinking
- 10 Year Enrollment Discussion – (Decision needed)
- Grade Configuration Options
- Current Population Configuration
- Elementary School Planning – Equity and “even” Section Structure

## 2. Option Components / Site Constraints

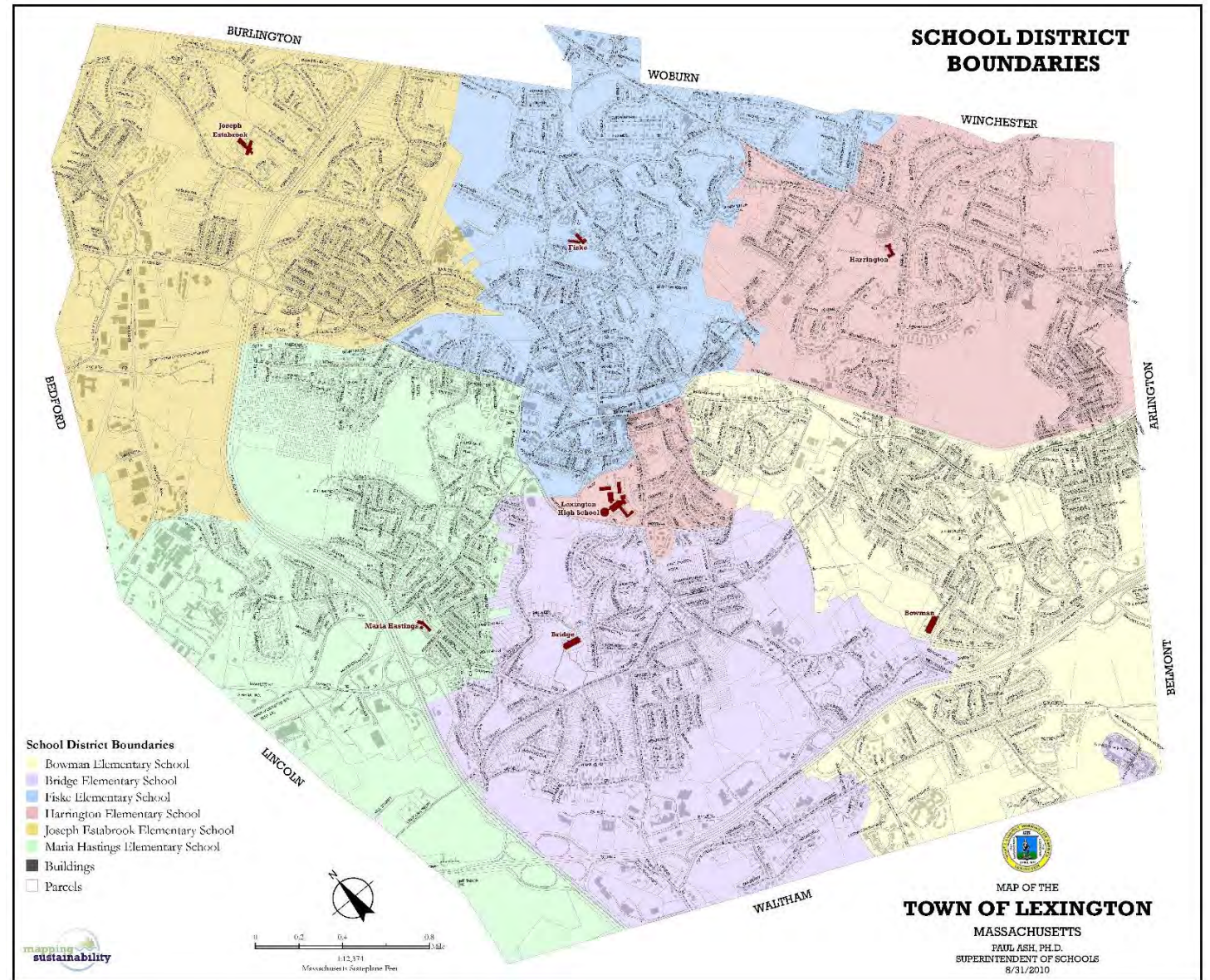
## 3. Draft Chart of Options

## 4. Near Term/Temporary Population Concerns and Opportunities

## 5. Schedule / Next Steps

# BIG PICTURE

- Town Wide Solution vs. Individual School Solutions
- Grade Configurations
- 21<sup>st</sup> C Ideas
- Redistricting
- In-town School Choice
- Equity not related to school size



# POPULATION ANALYSIS

	Current Population 2014-2015	Anticipated Population 2015-2016 Next Year	Anticipated Population 2019-2020 5 Years	Anticipated Population 2024-2025 10 Years	10 Year Growth
Elementary Schools (6)	3,025	3,049	3,206 – 3,293	?	?
Middle Schools	1,617	1,658	1,819	?	?
Lexington High School	2,107	2,169	2,265	2,504	397

 Enrollment Working Group – Linear Extrapolation Method

 District Projections – Cohort Survival Method

## Middle Schools Progression Rate

1.85 = 1,692 = 75 students

1.95 = 1,783 = 166 students: (closest to the EWG forecast)

2.05 = 1,872 = 255 students

# GRADE CONFIGURATION OPTIONS

Current													Comments	
PreK	K	1	2	3	4	5	6	7	8	9	10	11	12	Status Quo, Most people are likely comfortable with this configuration
Option 1														
PreK	K	1	2	3	4	5	6	7	8	9	10	11	12	K-8 is inefficient in small elementary schools, likely require more classrooms
Option 2														
PreK	K	1	2	3	4	5	6	7	8	9	10	11	12	Adds a transition in within the elementary grades which can be disruptive; but likely reduces the number of classrooms needed
Option 3														
PreK	K	1	2	3	4	5	6	7	8	9	10	11	12	Relieves elementary schools only; requires early childhood school and MS additions
Option 4														
PreK	K	1	2	3	4	5	6	7	8	9	10	11	12	All elementary and both MS are relieved, Early Childhood and High School become the priority
Option 5														
PreK	K	1	2	3	4	5	6	7	8	9	10	11	12	Relieves elementary schools only, High School become the priority
Option 6														
PreK	K	1	2	3	4	5	6	7	8	9	10	11	12	

## COMPONENT OPTIONS - BOWMAN

1. **No Additions (Status Quo):** assumes population increase are accommodated elsewhere
2. **No Additions (reduce population):** repurpose some spaces to better accommodate SPED, music, art, 21<sup>st</sup> C enhancements, and modest future growth
3. **Addition (classrooms only):** to accommodate growth
4. **Addition (classrooms + increase to “core spaces”)** Growth + Cafe, Gym, Library, SPED, music, art, , 21<sup>st</sup> C enhancements

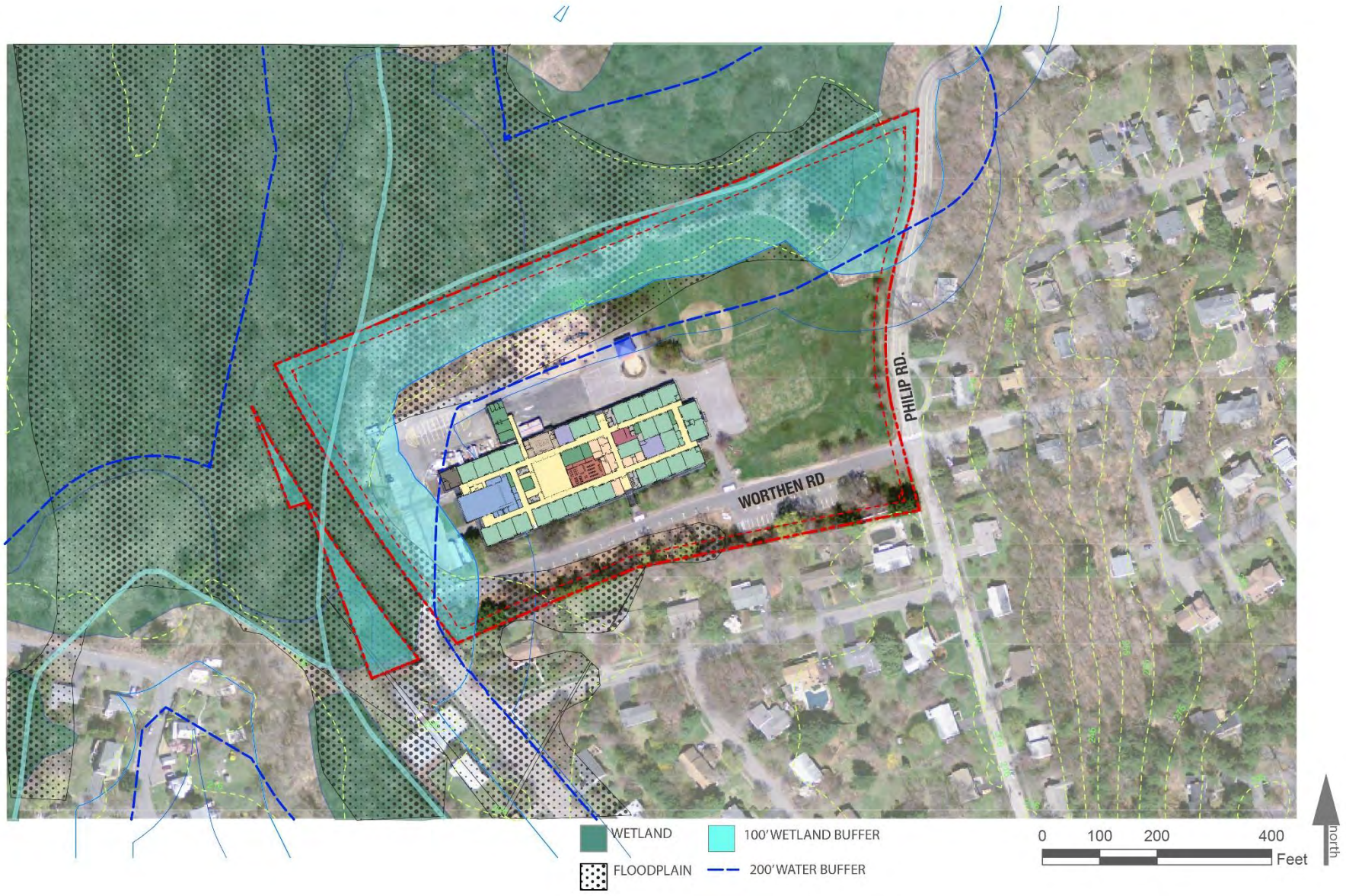


0 100 200 400 Feet



Bowman Elementary School  
*Lexington Public Schools*

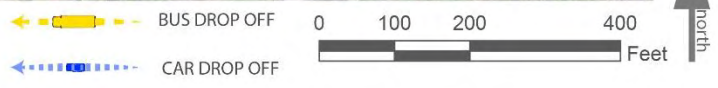
SMMA



Bowman Elementary School  
*Lexington Public Schools*







Bowman Elementary School  
*Lexington Public Schools*



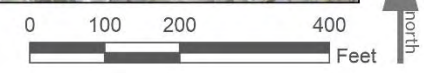
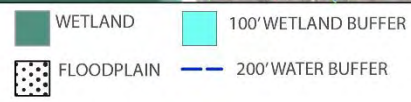
## COMPONENT OPTIONS - BRIDGE

1. **No Additions (Status Quo):** assumes population increase are accommodated elsewhere
2. **No Additions (reduce population):** repurpose some spaces to better accommodate SPED, music, art, 21<sup>st</sup> C enhancements, and modest future growth
3. **Addition (classrooms only):** to accommodate growth
4. **Addition (classrooms + increase to “core spaces”)** Growth + Cafe, Gym, Library SPED, music, art, , 21<sup>st</sup> C enhancements



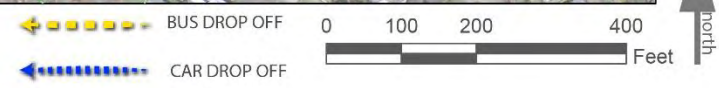
Bridge Elementary School  
*Lexington Public Schools*

SMMA



Bridge Elementary School  
 Lexington Public Schools

SMMA



# COMPONENT OPTIONS - ESTABROOK

1. No Work (Status Quo):
2. Redistrict to take advantage of available space



## COMPONENT OPTIONS - FISKE

1. **No Additions (Status Quo):** assumes population increase are accommodated elsewhere
2. **No Additions (reduce population):** repurpose some spaces to better accommodate SPED, music, art, 21<sup>st</sup> C enhancements, and modest future growth
3. **Addition (classrooms only):** to accommodate growth
4. **Addition (classrooms + increase to “core spaces”)** Growth + Cafe, SPED, music, art, 21<sup>st</sup> C enhancements





Fiske Elementary School  
*Lexington Public Schools*

SMMA



Fiske Elementary School  
 Lexington Public Schools

SMMA

# COMPONENT OPTIONS - HARRINGTON

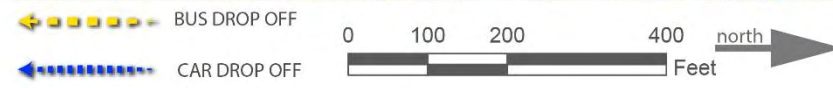
1. **No Additions (Status Quo):** assumes population increase are accommodated elsewhere
2. **No Additions (reduce population):** repurpose some spaces to better accommodate SPED, music, art, 21<sup>st</sup> C enhancements, and modest future growth
3. **Relocate Pre-K Program (convert 3+ to ES classrooms)**
4. **Addition (classrooms only):** item 3 + to accommodate growth
5. **Addition (classrooms + increase to “core spaces”)** Growth + Cafe, Gym, SPED, music, art, 21<sup>st</sup> C enhancements



Harrington Elementary  
*Lexington Public Schools*

SMMA





# COMPONENT OPTIONS - HASTINGS

1. Capital Project (for 399 students – 3 sections)
2. Capital Project (for 532 students – 4 sections)
3. Capital Project (for 665 students – 5 sections)
4. Capital Project (for 798 students – 6 sections)
5. Capital Project (select one of 1 – 5 above + Pre-K)

Variables: MSBA Schedule and MSBA approved size



Hastings Elementary School  
*Lexington Public Schools*

SMMA







Hastings Elementary School  
 Lexington Public Schools



# COMPONENT OPTIONS – CENTRAL ADMINISTRATION BUILDING SITE

1. Central Admin leases space in an office building
2. Capital Project (convert to K-5): renovation
3. Capital Project (new K-5): Remove existing building
4. Capital Project (new Early Childhood – Pre-K / K):
5. Central Administration Remains, New Pre-K behind



Harrington Elementary  
*Lexington Public Schools*

SMMA

# COMPONENT OPTIONS – LACONIA STREET SITE

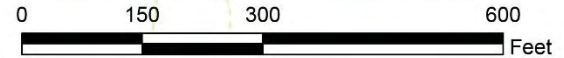
1. Capital Project (new K-5)
2. New Pre-K building
3. Capital Project (new Early Childhood – Pre-K / K):
4. Develop for Recreation Fields (swap for ES fields)



TOWN OF LEXINGTON  
PROPERTY/  
CONSERVATION LAND



PRIVATE PROPERTY  
TOWN OF LEXINGTON  
PROPERTY



# ELEMENTARY SCHOOL SECTIONS

Sections	1	2	3	4	5	6
Kindergarten Classrooms (@18 students)	18	36	54	72	90	108
Grades 1-5 Classrooms (@ 23 students)	115	230	345	460	575	690
Total Students per School	<b>133</b>	<b>266</b>	<b>399</b>	<b>532</b>	<b>665</b>	<b>798</b>

Example: 3 Section School

3 x 18 kindergarten students = 54 students  
 5 grades x 3 / grade section = 15 sections 1-5 classrooms  
 5 grade 1-5 classrooms x 23 students = 345  
 Total Students in 3 section school = 399

Note: 90% Utilization Factor Recommendation

# ENROLLMENT AND CAPACITY– ELEMENTARY SCHOOLS

School	Current Student Enrollment	Building Capacity based on current use	Building Capacity after Right Size Re-design	Population Change if schools are right-sized Delta	5 year Projected Enrollment	10 year Projected Enrollment
Bowman	576	578	532	-46 4 Sections/Grade		
Bridge ES	585	573	532	-46 4 Sections/Grade		
Estabrook ES	500	596	596	+96 4+ Sections/Grade		
Fiske ES	489	486	486	-69 3 Sections/Grade		
Harrington ES	446	417 Excludes Pre-K	486	+69 Removes Pre-K		
Hastings ES	426	468	665 5 Section/Grade	+239		
Central Administration (Old Harrington)	-	-	-	-		
New Elementary School	-	TBD	TBD	-		
<b>Total District</b>	<b>3022</b>	<b>3118</b>	<b>3297</b>		<b>3293</b>	<b>?</b>
<b>Delta</b>		<b>+96 Students</b>	<b>+243 Students</b>		<b>+271 Students</b>	<b>?</b>



# DISTRICT OPTIONS – ELEMENTARY SCHOOLS

## COMBINED CAPACITY - 5 YEAR ENROLLMENT PROJECTION

SOLVE FOR 271 STUDENTS AFTER RIGHT SIZING EXISTING ELEMENTARY SCHOOLS

	Bowman ES	Bridge ES	Estabrook ES	Fiske ES	Harrington ES	Hastings ES	Central Administration Building (Old Harrington)	New Elementary School	Added Capacity
1.	-	-	Growth + Redistricting +96 Students	-	Renovation Remove Pre-K (+69 students)	MSBA Capital Project (+106 Students) 4 Sections/Grade	Pre-K Renovation (+0 students) Phase 2 Report	-	<b>271 Students</b>
2.	-	-	Growth + Redistricting +96 Students	-	-	MSBA Capital Project (+239 Students) 5 Sections/Grade	-	-	<b>335 Students</b>
3.	-	-	Growth + Redistricting +96 Students	-	Renovation Remove Pre-K (+69 students)	MSBA Capital Project (+239 Students) 5 Sections/Grade	Pre-K Renovation (+0 students) Phase 2 Report	-	<b>404 Students</b>
4.	-	-	Growth + Redistricting +96 Students	-	-	MSBA Capital Project (-69 Students) 3 Sections/Grade	-	MSBA Capital Project (+532 Students) 4 Sections/Grade	<b>463 Students</b>
5.	Addition/Renovation (+87 students) 5 Sections/Grade	Addition/Renovation (+92 students) 5 Sections/Grade	Growth + Redistricting +96 Students	Addition/Renovation (+46 students) 4 Sections/Grade	Addition/Renovation (+133 students) 4 Section/Grade	MSBA Capital Project (-69 Students) 3 Sections/Grade	-	-	<b>385 Students</b>
6.	-	-	Growth + Redistricting +96 Students	-	-	MSBA Capital Project (+239 Students) 5 Sections/Grade	Renovation (+320 Students) Capacity determined in Phase 1	-	<b>665 Students</b>
7.	-	-	Growth + Redistricting +96 Students	-	-	MSBA Capital Project (-69 Students) 3 Sections/Grade + Pre-K	MSBA Capital Project (+532 Students) 4 Sections/Grade	-	<b>559 Students</b>

# SCHEDULE / NEXT STEPS

## Phase III Workplan and Ad Hoc Meetings

Meeting Date	Agenda
Thursday, November 20, 2014	Elementary concepts
Thursday, December 04, 2014	Middle School concepts, refined Elementary School concepts
Thursday, December 11, 2014	High School concepts, refined Middle School concepts
Thursday, December 18, 2014	Refined High School concepts, Prioritize Components
Thursday, January 08, 2015	Preliminary Cost Models, Draft Report
Thursday, January 15, 2015	Draft Report Comments



# Discussion