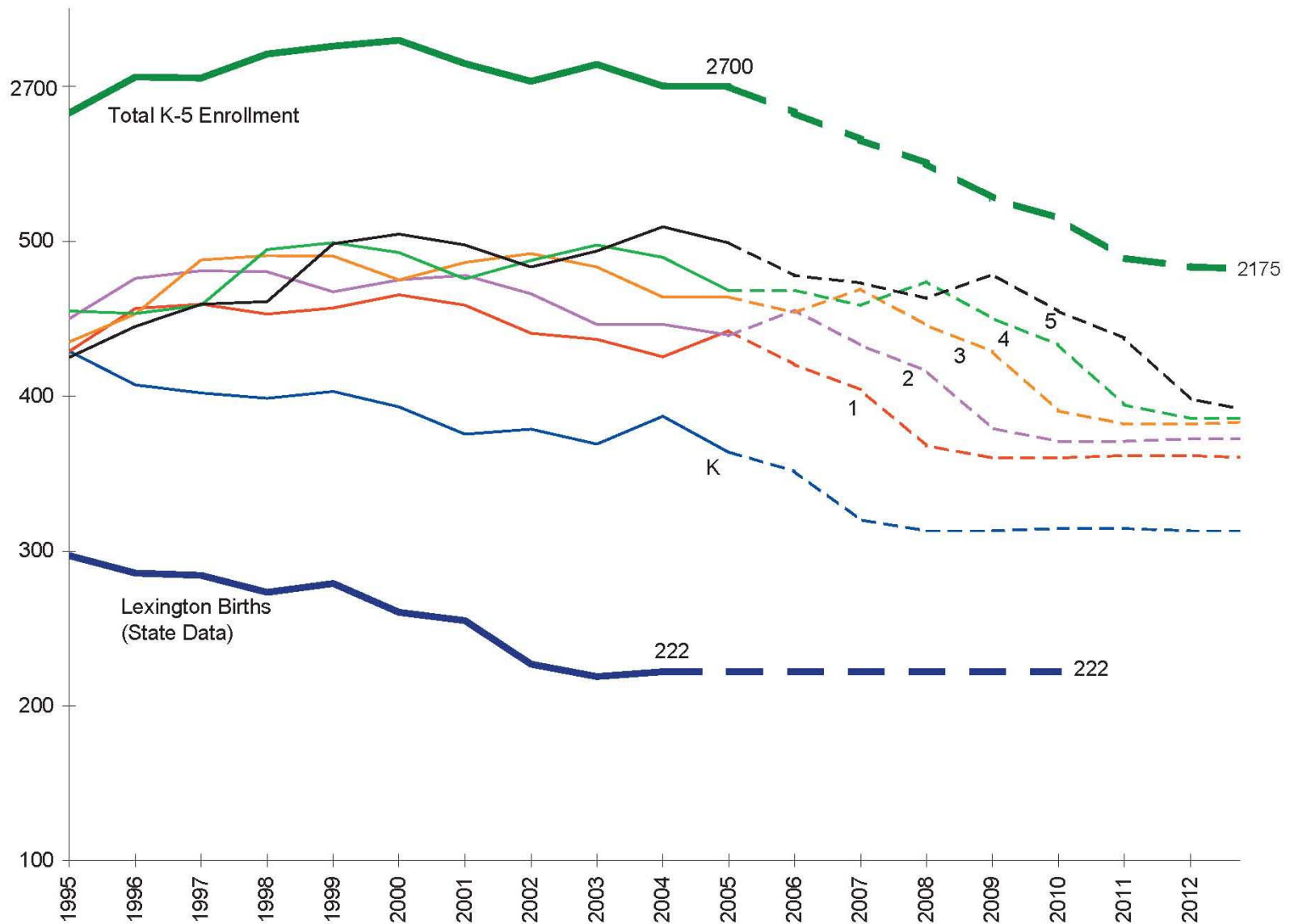


Elementary Grade Enrollment Projections – DPC Confirmation

November 14, 2006

Elementary School Masterplan
Lexington Public Schools

Design*partnership*
OF CAMBRIDGE



Births, K-5 Enrollments & Enrollments by Grade

November 14, 2006

Elementary School Masterplan
Lexington Public Schools

Designpartnership
OF CAMBRIDGE

Lexington Elem Schools
Total capacity analysis
10/16/06

	Bowman	Bridge	Estabrook	Hastings	Fiske	Harrington	Total	<i>total KG + general CR</i>
I. Room count								
KG's	4	4	4	4	4	4	24	127
gr. 1-2 CR's	8	7	7	6	7	6		
gr.3-5 CR's	11	10	10	10	11	10		
total general CR's	19	17	17	16	18	16	103	
swing CR's	1	1	1	1	1	1		
District-wide Spec. Ed.								
	2 <i>LLP</i>	2 <i>CARE</i>	2 <i>CARE/EI</i>	2 <i>ILP</i>	2 <i>ILP</i>	2 <i>DLP</i>		
Art	1	1	1	1	1	1		
Music	1	1	1	1	1	1		
Technology	1	1	1	1	1	1		
Extended Day	0	0	0	0	0	0		
II. Pupil Capacities								
KG	72	72	72	72	72	72	432	
gr. 1--5	440	394	394	372	418	372	2,390	
TOTAL	512	466	466	444	490	444	2,822	

- Notes:
1. Modular classrooms are included in the capacity counts.
 2. Classrooms used for extended day are not separately accounted but are recorded as regular classrooms.
 3. At schools where offices and small group rooms are currently used for Reading and Resource in lieu of full-sized classrooms, this analysis assumes continuation of that practice.
 4. At Estabrook, this analysis assumes that lunch continues to be taken in the main lobby.
 5. At Fiske, this analysis assumes that the District-wide Curriculum Center will be housed at another location.
 6. At Harrington, this analysis assumes that the existing Early Childhood Center will remain.
 7. Pupil capacities are calculated for the general classroom and kindergarten count at each school (excluding swing CR's) based on the following policy for optimum class size at each grade:

Kindergarten:	18
Grades 1 & 2:	22
Grades 3, 4, & 5:	24

Lexington Elementary Schools Master Plan

11/8/06

ES District Configuration Options:

K-5 Design Enrollment: 2175

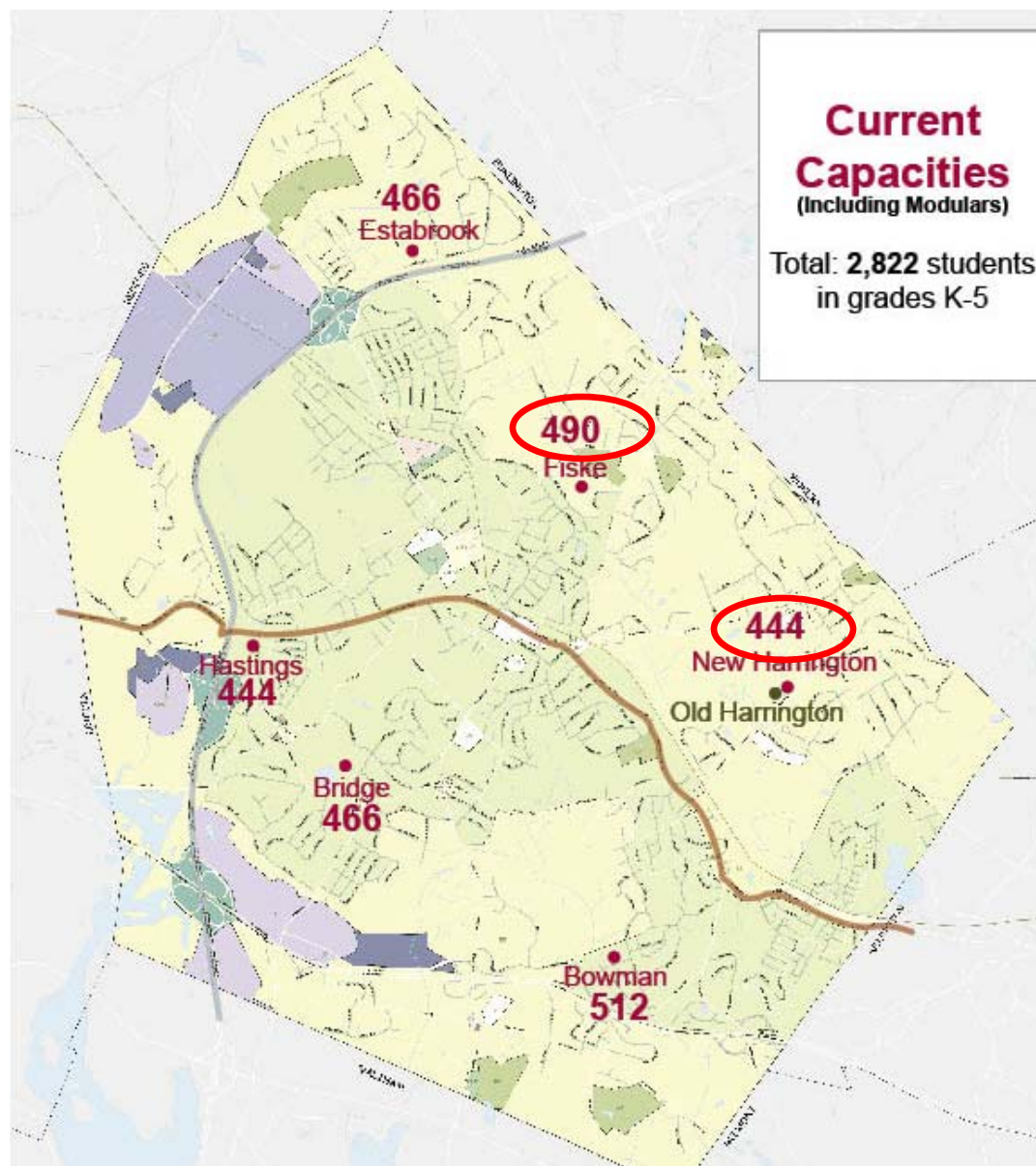
I. 6-School Option:

	capacity
Fiske	490
Harrington	444
New School 1	310
New School 2	310
New School 3	310
New School 4	310
Total	2174

II. 5-School Option:

	capacity
Fiske	490
Harrington	444
New School 1	413
New School 2	413
New School 3	413
Total	2173

November 14, 2006



Elementary School Capacities

November 14, 2006

Elementary School Masterplan
Lexington Public Schools

Design*partnership*
OF CAMBRIDGE