

III.  
New  
Estabrook  
School



November 14, 2006



I. Add / Reno



II. New Construction



III. New Construction

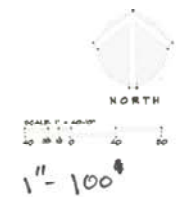


## Site Plans: Hastings School

November 14, 2006

**Elementary School Masterplan**  
Lexington Public Schools

**Design***partnership*  
OF CAMBRIDGE



## Existing Site Plan: Hastings Elementary School

November 14, 2006

**Elementary School Masterplan**  
Lexington Public Schools

**Design***partnership*  
OF CAMBRIDGE



I.  
Add/Reno  
Hastings  
School



November 14, 2006

**Elementary School Masterplan**  
Lexington Public Schools

**Design***partnership*  
OF CAMBRIDGE



## II. New Hastings School



November 14, 2006

**Elementary School Masterplan**  
Lexington Public Schools

**Design***partnership*  
OF CAMBRIDGE



III.  
New  
Hastings  
School



November 14, 2006

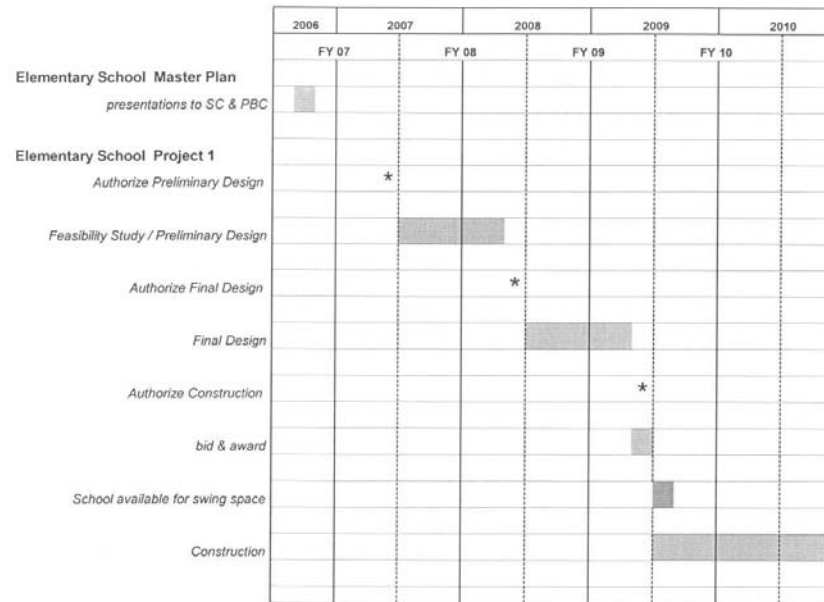
Elementary School Masterplan  
Lexington Public Schools

Design *partnership*  
OF CAMBRIDGE

## Lexington Elementary Schools Master Plan

11/9/06

### I. Preliminary Implementation Plan



### II. Swing Space Calculation

#### I. System-wide Capacity--one school closed:

	all schools	one school closed
Bowman	512	512
Bridge	466	466
Estabrook	466	466
Hastings	444	444
Fiske	490	490
Huntington	444	444
Close one school at 466		-466
Total	2822	2356

#### II. Projected Enrollments (average)

	FY 10	FY 11
3-year forecast 11/29/05:	2447	2394

November 14, 2006